



# Findon

February  
2019

Community newsletter for  
Findon, West Sussex  
Including the Church Parish of  
Findon, Clapham & Patching

Editorial team led by  
Nick Gore

# News

*Findon News is published monthly and is available free of charge from various outlets throughout Findon and can be viewed on the Findon Community website - [www.findonvillage.org](http://www.findonvillage.org)  
Findon News does not endorse any advertisements published. No responsibility will be taken for errors, omissions or any claims made by contributors. Opinions expressed are not those of the publisher.*

Articles for publication (**maximum 650 words**) can be submitted by email to [findonnews@zoho.com](mailto:findonnews@zoho.com), or via the 'Findon News Box' in the Village Shop.

**Closing Date for Next Publication : 20<sup>th</sup> February 2019**

## Two Dog Attacks on Monday 14th and Sunday 20th January

Two dog attacks have taken place at Soldiers Field next to Convent Gardens on Monday 14th January and Sunday 20th January 2019.

On the Monday 14th one lamb was badly injured and another was so frightened it jumped through the top two bars of the fence and was missing for 36 hours. It was finally cornered in a garden in Nepcote Lane having been seen at the flats near the old Forge.

The second attack happened on Sunday evening 20th January and this time one lamb has died and the badly injured lamb on Monday was attacked again.

We believe the dog(s) could be local and on both occasions would have returned with blood on their fur.

We would like to ask the village for help to find the offending dog(s). Once a dog has attacked a sheep and tasted blood it is inevitable it/they will attack again and

possibly travel further afield. At this time of year it places not only ewes in lamb in danger but also people, especially children.

A farmer, seeing dogs worrying his animals, is legally permitted to shoot and destroy such dogs.

Please help to keep farm animals in local fields safe and also those people enjoying the walks in and around our village by reporting in confidence anything known about these attacks.

Please contact either Gerry on 07763 768428 or Graham on 07753 755889.

Our village has much history relating to sheep farming around the area, so if you can, please help in order that this tradition continues and there are no further incidences

Thank you - Graham Langford

View Findon News on the Findon Village website [www.findonvillage.org](http://www.findonvillage.org)

# HELP!

As you are aware there is a programme of works to extend and improve the Village Hall facility, where the work is well underway and the finishes are now being planned and ordered. The floor finish requires funding and has been costed out at approximately £8,000.

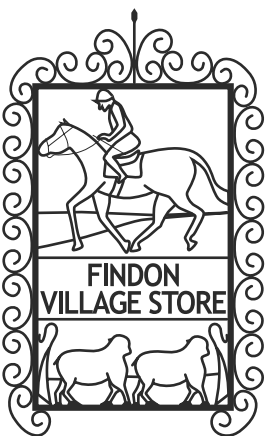
The Village Hall committee are inviting loans from the community and it is intended that these should be in tranches of £500, repayable no later than 31 January 2020 on an interest free basis. Should, for any reason, the Findon Village Hall Trust not be in a position to repay the loan by the said date, then it would be the intention to repay as soon as possible after 31 January 2020, but with interest accruing at 4% from 1 February 2020 to the date of repayment.

Findon Village Hall Trust, remain confident that repayment will be made within the forecast 12-month period.

**Loan Forms can be obtained from: David Gear, Secretary,  
Findon Village Hall Trust, High Street, Findon,  
West Sussex BN14 0UG**

**Tel: 07415 476543 - Email: [dgear54@outlook.com](mailto:dgear54@outlook.com)**

**Thank you for your support**



**FINDON VILLAGE STORE**

**Tel:**

*Post Office & Newsagency*

**01903 877110**

Groceries; Bread; Cakes; Freshly made Sandwiches;  
Beers, Wine & Spirits; Tobacco; Cards

*Run by the Community for the Community*

**Shop Opening Hours:**

**Post Office Opening Hours:**

Horsham Road  
Findon  
BN14 0TF

**Mon to Sat 07:00 - 19:00**

**Mon to Fri 08:30 - 17:30**

**Sunday 07:00 - 12:00**

**Sat / Sun 08:30 - 12:30 / 12.00**

[www.findonvillagestore.org](http://www.findonvillagestore.org)

[findonvillageshop@gmail.com](mailto:findonvillageshop@gmail.com)

## From the Rectory (with dates for your diary)

Well, January is over and 2019 is on its way! Many things appear uncertain as I write, not least our political situation, but there is one thing we can all be completely certain of – that God loves and cares for each and every one of us, whether we are aware of his presence or not. Our Bishop, Martin, is encouraging all Christians to consider their personal vocation this year and as a starting point, Baptism cards were given out on our churches on Sunday 13th January. Our baptism, whether as an infant or later in life, is the point where we become members of Christ's family on earth, joined through the Holy Spirit with our brothers and sisters around the globe. It is encouraging that I've had a number of enquiries already this year about having children (and adults) christened. Baptismal promises are then affirmed at a Confirmation Service with prayer and laying on of hands by the Bishop. This year, the Deanery Confirmations will take place on Sunday 30th June in the evening. Do speak to me or Colin if this is something you'd like to explore further.

I wrote a little about vocation in the last edition of Findon News, so won't repeat myself here, but during Lent there is the opportunity to explore your calling and your relationship with Christ through the course designed by the Diocese. I am excited by the material, which includes personal stories from a wide range of people via u-tube about how knowing Jesus impacts on their lives. There will be groups running at the Rectory in

Findon and I'd love to see many of you joining us for this. The more people we have, the more interesting our discussion will be, with differing viewpoints and experience! One group will meet at 7.30pm on Wednesdays, beginning on Ash Wednesday (March 6th) the other on Friday afternoon at 3pm (beginning March 8th), with 5 weekly sessions altogether. If you've not done something like this before, why not give it a try and make some new friends at the same time! Please contact the Parish Office if you're interested, so we have an idea of numbers.

This year is also when every church renews its Electoral Roll. This happens every 6 years and even though your name may be on our current roll, you still need to fill in a new form please. Forms are available at the Rectory or at each of the 3 churches and should be returned to the Rectory or given to a Warden after a Service please. I would encourage you as villagers to join the electoral roll of the Parish as this entitles you to have a say in what happens at our churches. Our annual Church meeting (APCM) will be held in St John the Baptist Church, Findon, on Sunday 16th April straight after our Palm Sunday worship. This is where Churchwardens and PCC members are elected, and it would be wonderful to have some new people coming forward, offering to serve on the Parochial Church Council or as a Churchwarden.

*continued on page 5* ►

Rev. Helena Buqué, Priest in Charge and Colin Cox, Curate:  
c/o The Rectory, School Hill, Findon, BN14 0TR. Tel: 873601  
[findon.rectory@btinternet.com](mailto:findon.rectory@btinternet.com)    [www.findon-clapham-patching-churches.com](http://www.findon-clapham-patching-churches.com)  
**FB:** Findon Clapham Patching Churches

Buying ■ Selling ■ Letting ■ Commercial ■ New Homes

Michael  
**Jones**  
& Company

# Have you seen the signs?



## **There are unmissable signs that now is a great time to sell your property.**

Many people are searching for a home to buy or let  
in your area.

Whether you're looking for a quick sale, or are simply  
curious to find out how much your property is worth,  
contact us today for a free, no obligation valuation.

### **Michael Jones Findon**

208 Findon Road  
Findon Valley  
Worthing  
BN14 0EJ

**T: 01903 872949**

**[www.michaeljones.co.uk](http://www.michaeljones.co.uk)**



Offices in Worthing, Lancing, Goring, Findon, Broadwater and Rustington

◀ *continued from page 3*

We are particularly looking for someone willing to take on the duties of Churchwarden at Findon this year. To be eligible, you need to be on the Electoral Roll and a communicant member of the church. Having been a Warden myself (for 7 years!) in another Parish, I can testify to what a rewarding role this is. It does involve a commitment of time, but this can be negotiated! Wardens are also trustees of the church, since it is a registered charity, and trustees of the Friends of that particular church, another charity. In my mind, the most important thing to have is enthusiasm, and preferably some understanding of buildings, since this forms a large part of the Warden's responsibilities – caring for and arranging the maintenance of our ancient and beautiful churches. Another responsibility is looking after the well-being of your Parish Clergy, making sure they don't work too hard!! Wardens

are elected annually, 2 at Findon and one each at Clapham and Patching, and it is helpful (although not essential) if you live in the village. In addition to PCC meetings, I usually meet with wardens about 3 times a year. Please come and talk to me if you'd like to know more about being a Warden, or a PCC member; if you have a vocation. an interest in building work and ancient buildings, this may well be for you!

This month I'm also trialling an idea that came to me in the middle of the night (as the best ones often do!) by offering a meeting place at the Rectory for our 'teens' to meet up for a chat, bringing any questions – big or small - about life. I'll be in the house, with another adult for safeguarding reasons, but it will be their agenda, their 'space' and I'll only take part if they want me to.

Lots of dates for you to note, looking forward to chatting with you!

Every blessing, Helena

## ***My Space***



*A new opportunity for teenagers to meet up  
and chat over refreshments*



*Sunday 24<sup>th</sup> February*

*5.30pm at Findon Rectory, School Hill*

*Bring your questions and thoughts about life! (Answers not guaranteed)*

### **Youth Club**

Every Thursday during school term time  
Different themes every week, Ages 12+ -  
5.00pm till 6.30pm at The Rectory Findon

## **JULIE JORDAN**

### **Professional Curtain Maker and Interior Design**

Phone for free estimates  
01903 263823 / 07801687155  
Juliejordan100@yahoo.co.uk

## **RELIABLE WINDOWS**

Friendly, Local, Well Established

### **WINDOW CLEANER**

Contact Chris for a quote  
**07780 687522**

**chriswitten10@gmail.com**

Window cleaning service offered  
Monthly, Bi-monthly or Quarterly  
Soffits, Fascias, Guttering,  
Conservatory Roofs

**\*\* No Job Too Big or Small \*\***

Water Fed Pole System or  
Traditional Window Cleaning

## **Findon Accountancy**

Chartered Certified Accountants  
Findon based, reasonable rates  
Full range of business & personal accounting  
and taxation services available

Ken Elliott FCCA, FCIS

Telephone 01903 872589

Email: kenelliott@findonaccountancy.co.uk

Web: www.findonaccountancy.co.uk

## **S Baker Carpets**

**Sussex Based Company Specialising in:**

Carpets, Vinyl, Karndean, Amtico,  
Laminate & Wood flooring

*Check out our work in the  
Findon Village Post Office*

**Call Steve on 07966 573474**

to book your free home consultation

Stephen.g.baker@sbaker-carpets.co.uk

## **OVER 25 YEARS OF DEALING IN TOP QUALITY ANTIQUES & INTERIOR DESIGNER FURNITURE AND OBJECT D'ART.**

Our Services: Free Valuations  
Insurance Valuations  
Silver & Gold Polishing  
Furniture Restorations  
Buy and Sell - New items weekly  
Silver and Gold Bought

**2 THE SQ**  
By Adam Collard Antiques & Interiors

**2 THE SQUARE  
FINDON VILLAGE BN14 0TE**

**01903 872205 / 07740 947847**

**www.2thesq.co.uk / adamcollard71@yahoo.co.uk**

## Village Store News

Christmas was a very busy and rewarding time for the shop, thanks in no small part to Becky Fagan's creativity and hard work to make the shop look fabulous and be stocked with great Christmas treats. Thanks very much too to all the volunteers that helped on the Christmas Wreath production line she led and which proved to be very popular. Staff and shop volunteers rose admirably to the challenge of the busiest period of trading since the shop opened.

Also making a significant contribution to the Christmas sales were the Findon Village Store Christmas cards, created by local artist and volunteer, Helen Cuppleditch.

January is traditionally a quiet month which gives us a little time to look to the forthcoming year and start planning for future events, the first of which will be Valentines Day. Once again we will be offering fresh flowers, which we can deliver locally free of charge. You can add chocolates, wine or any other shop item you like.

We are also hoping to start a general delivery service to villagers by using the 'good neighbour scheme'. The scheme is a community initiative operated by volunteers, the aim is to provide a service to the less mobile members of our community. Naturally we will need a small group of volunteers to operate this service, which will involve

## Jo O'Dell, Volunteer/Committee Member

delivering items and dealing with cash payments. It's a role that takes up just a few minutes a week but potentially has a really positive impact for the recipients. Please contact Jo O'Dell if you would like to volunteer as a member of the 'delivery team' [joannaodell@yahoo.com](mailto:joannaodell@yahoo.com) or 07921 999067.

Our newspaper deliveries have now been resumed for 1 year. Some of the previous delivery customers have returned, unfortunately not to the level that we had hoped for to make it a sustainable venture. It costs from just 40p per day to have your newspaper or magazine delivered - well worth the money on those cold winter mornings! Please try to support the shop by using this excellent service.

### Valentines Flowers from Findon Village Store

12 Red Roses - £35.00

Tulip Bouquet - £20.00

Single Red Rose - £9.00

Prices include delivery within the  
local area on Valentine's Day

Add on items such as greetings cards,  
chocolates or wine can be purchased  
from the store and delivered with your  
flowers.

Gift wrapping of extras - £1.00 per order.

If you wish to send non floral gifts only,  
this is possible for orders over £15.00

Delivery will be on 14th February, we are  
unable to offer specific times.



## CARPET FITTING

We Will Fit  
Your Own Carpets

Re-stretching - Repairs - Cleaning  
Supply underlay - Hardboard - Screeding

*We supply all makes of carpets and vinyls*

Call Les Sheeran on:

**Tel: 01903 770477**

**Mob: 07966 212 358**

[www.carpetsandvinylsdirect.co.uk](http://www.carpetsandvinylsdirect.co.uk)

Over  
30 yrs  
trading

## F Silverthorne Fishmongers

Quality Fish Est. 1907

145 Montague St, Worthing

**Deliveries to Findon**

(Thursday & Friday Mornings)

**Tel. 01903 200854**

Call by 9:30am on the day,  
or the day before your delivery



## MONARCHS WAY Wellbeing Clinic

36 Cross Lane, Findon Village

**Sports & Therapeutic Massage therapies for  
general aches and pains, arthritis, sports,  
recreational and occupational injuries, stress and  
stress related conditions and general wellbeing.**

**By appointment only – please call 07841 636727**

[www.monarchswayclinic.co.uk](http://www.monarchswayclinic.co.uk)

### AcTechUK.com

#### Making Technology Work For You

Help with all aspects of technology for  
your home, mobile and business.

PC/Laptop fix, Network setup,  
telephone, audio visual services  
£30 call out with first fix and advice  
No fix, no fee. Findon Valley based.

25 years experience.

Customer Service Like it Used To Be!

Please call Andy:

**01903 930850 or 07515 948096**

**Email: [info@actechuk.com](mailto:info@actechuk.com)**

### **Peckhams Butchers**

*Locally produced meat,  
cut to your requirements.*

Daily deliveries of  
fresh fruit & vegetables.

We also provide a Friday  
morning delivery service  
for customers who find it  
difficult to get to the shop

**The Square, Findon**

**Tel: 01903 873202**



# Findon Friends of St. Barnabas

## 'Curry Night and Mini-Auction'

a fund-raising evening

**Monday, 4<sup>th</sup> March**

**at 7.00pm**

at the Tajdar Restaurant, Findon Village

This event has always proved to be great fun, with great food and a great evening of socialising and fund-raising!

Because of space, we can only seat 50 guests, so your early application for tickets is advised!

**Tickets will be £17.50 each**

**Available from Mike 07887 995299 / 01903 877255**

**and Richie 01903 877930**

Please note, drinks are not included in the ticket price and there are no ticket sales on the evening of the event at the door!

*We look forward to seeing you and your friends there!*

Despite light showers and cool temperature, there were over 70 people who came to enjoy the Coffee and Mince Pie Morning in aid of St. Barnabas, held on Saturday 24th November at Molly Stooks's home, 2 Fox Lea, Findon.

Not only mince pies, but sandwiches, home made sausage rolls and a great variety of home made cakes were also available for guests to consume.

A very successful raffle, a splendid gift table and guess the weight of the cake (made by Maggie Martin) and bottle tombola, resulted in the magnificent sum of £850.00 for the Hospice. Sincere and grateful thanks to Molly for the use of her lovely home and to the wonderful Committee and other friends who generously gave food and time to help make the morning so successful.

Mike Solomons, Chairman,  
Findon Friends of St. Barnabas

---

## Letter from Jennifer Wakeford (Mitchell)

*Follow up to the Findon school photo of circa 1945 published in the December edition of Findon News*

-----

In the December Findon News you enclosed a photo of schoolchildren. I also have this photograph which was taken on "Empire Day" and we were all dressed up in different country clothes etc.

Unfortunately I am on the left hand side but have been cut off the photo, I was an Australian girl.

My brother Colin is also in the photo. He was a knight standing in the back row. In the front row is Anne Knight as Amy Johnson. She moved from Findon when she was 10 years old to Oxfordshire and I am still in touch with her after all these years.

I moved from Findon a year ago due to ill health.

## Dog friendly Holiday Home in Findon

The Haven @ Findon is a modern 2 bedroom bungalow in Findon village that sleeps up to 4 people and is ideally situated for family and friends (and their dogs) visiting relatives, attending weddings, parties or just wanting a weekend break or holiday. It is available on a self-catering basis from a minimum 3 night stay. We are rated 'Excellent' on Trip Advisor and AirBNB.

**You can visit our website -[www.thehavenfindon.uk](http://www.thehavenfindon.uk) or for more details or enquiries phone Steve on 07590533892**

### CLIP CLOPS

Holiday Accommodation

In Findon Village

*Lovely spacious self catering accommodation - sleeps two*

Twin bedroom, Sitting room, Shower bathroom, lovely spacious sun lounge, Kitchen and garden.

Dogs welcome. Easy walk to local pub & shops or onto the downs.

Minimum stay 3 nights.

Contact: Karen 07886650747  
[karmitage58@gmail.com](mailto:karmitage58@gmail.com)

### HOLIDAY ACCOMMODATION

**"Little Longmead" Findon Village**  
**Sleeps 4 - Self Catering**

1 Double King Size, 1 Twin room, Bathroom  
Kitchen, Lounge Dining, Lovely Views

Own Enclosed Garden & Patio with  
Garden Furniture and Barbecue

*One Well Behaved Dog Welcome*

**Minimum Stay 2 Nights**

Contact Ann: Tel - 07802507976  
Email - [pamamm@talk21.com](mailto:pamamm@talk21.com)

# DOMESTIC HEATING & ELECTRICAL SERVICES LTD

Heating, Plumbing & Electrical

Est 1968



- Boiler Installations
- Electric Boiler Installations
- Boiler Servicing & Repairs
- Gas & LPG (all appliances)
- Power Flushing
- Hot Water Cylinders
- Gas Fires & Wood Burners
- Bathroom Installations
- Radiator Installations
- All Plumbing Works



## 01903 442108

1-2 The Forge, Findon Village, West Sussex, BN14 0SE  
[www.domesticheatingservices.co.uk](http://www.domesticheatingservices.co.uk)



# Findon Village Pre-school

Youth Club Building, High Street, Findon  
West Sussex, BN14 0TA  
07762906911 - fvpreschool@gmail.com

more sustainable and a more inviting place for our children to learn.

We are very lucky having an amazing outdoor space which we are out in all weathers having great fun.

Findon village preschool has been providing education and childcare to children of the village and surrounding areas for over 40 years.

Our building at present was a café from Bognor seafront. The village people over 35 years ago flat packed it and re assembled it where it sits now behind the village hall .

The building has seen better days although lots of fantastic activities and learning still goes on there!

We are looking to raise funds to refurbish our building making it warmer,

The cost of the build will be about £80,000 we have already raised just over £20,000 and are hoping for support from the local businesses and people from the local area to be able to make our dream a reality bringing the spirit of the community together.

If you feel you could help us with funds or by supplying materials please contact Kim Fessey to find out more on 07762906911.

If you would like to come along to see what we have on offer please contact us.

Kim Fessey

---

## The Neglected Rabbit.

Will you think of me inside my hutch,  
That tiny "starter pack"  
that doesn't let me hop around  
so small, it hurts my back.

Will you think of me tomorrow  
When you go to work or school  
with a lovely lunch packed in your bag  
cos, I get hungry too.

Will you think of me just sometimes  
please? My hutch, it smells so bad.  
I'd love some water in my bowl  
and some hay... I'd be so glad.

Will you think of me when  
the sun shines bright  
and the weather is so hot,  
But, I can't get cool, the heat is cruel,  
Don't tell me you've forgot.

Will you think of me when  
the north wind blows  
and my hutch floor turns to ice,  
I'm shivering ,while you're all warm  
tucked under your quilt so nice.

Will you think of me? Please think of me  
I'm helpless, at your mercy  
Why did you buy me on a whim  
Ignore me, and then desert me

I can hop and leap over rainbows now  
I am happy now I'm free  
I wonder now that I have gone  
will you ever think of me?

From Paws Animal Sanctuary

— THE —  
**MELLOR PRACTICE**

INDEPENDENT FINANCIAL ADVISERS

**Is your answer 'YES' to any of these questions?  
Then we can help you!**

- Confused by the array of pensions options?
  - Need to invest an inheritance or pension lump sum?
- Worried about long term care funding?
  - Fed up with your cash ISA return?
  - Ethical investment a concern?

— ● ● ● —  
We are a team of fully qualified advisers, who can provide you with independent financial advice. Established locally since 1984, we pride ourselves on our friendly, professional service.

**NOW OPEN AT**  
31 Chapel Road | Worthing | West Sussex | BN11 1EG

Call us on **01903 882007**

Visit our website **[www.themellorpractice.co.uk](http://www.themellorpractice.co.uk)**

Drop in to **our Worthing office**

Or call and make an appointment to see us at **our Arundel office**

**Your first 45 minute consultation is at our expense**

The Mellor Practice Ltd is an appointed representative of Lighthouse Advisory Services Limited, which is authorised and regulated by the Financial Conduct Authority.  
The Mellor Practice Ltd, Registered in England, No. 10567558  
Registered Office: 41b Beach Road, Littlehampton, West Sussex, BN17 5JA  
The value of your investments can go down as well as up, so you could get less back than you invested.

The Cinnamon Trust Christmas Fair was held this year in our lovely Parish Church thanks to the kindness of Helena the Vicar. It was a great success and despite the very wet and cold weather everyone had a wonderful time. The results raised were incredible and I was able to send a cheque for £1,250 to the Trust. I received a thank you letter detailing how the money would be spent. This includes a therapeutic veterinary laser to help the elderly pets at the two sanctuaries and a new garden for the cats at Hillside.

I would like to say a huge thank you to everyone who helped on the day and before in every other way including baking, knitting, sewing and donating. You are all stars! I don't want to single anyone out as everybody did so much

but I feel I must mention Colin the curate. He was so patient and helpful and donated so much of his time especially on the very cold Friday whilst we prepared the Church.

It was a wonderful occasion and I hope we can do something similar next Christmas. The community feel was huge and the fact that so many people and animals will benefit makes it even better.

Well done to all - look out for our next events and if you would like to know more about the Cinnamon Trust please contact me.

Maggie Martin 01903 874173/07544 572702

---

## Scam Warning

Findon News has heard from a number of local residents who have recently fallen foul of scam phone calls and have been cajoled into letting fraudulent people know their bank details and gain remote access to their computer.

These scammers claim they are from some well known commercial company (Open Reach, British Gas etc) and are convincing, and most persistent in their endeavours to obtain your financial and personal data.

**BE WARNED** - Never pass on your bank details, or any information about your computer security over the phone.

## WANTED

A Volunteer Sheep Watch Person  
for  
Nepcote Flock

One regular day per week

No experience required  
but is an opportunity for  
interested person to learn  
about Shepherding

Must be able to drive

Please contact  
Graham Langford  
07753 755889  
For further details

Buying ■ Selling ■ Letting ■ Commercial ■ New Homes

Michael  
**Jones**  
& Company



## Pony Farm, Findon Village

A SPACIOUS detached bungalow, cul-de-sac location, 2 double bedrooms, MODERN FITTED KITCHEN, UTILITY, bathroom, separate WC. ATTRACTIVE GARDENS surround the property, private drive and GARAGE, useful OCCASIONAL BEDROOM area with additional bathroom, SUPERB VIEWS. NO FORWARD CHAIN, viewing essential.

### Asking Price £475,000

Findon Office 01903 872949 208 Findon Road, Findon Valley BN14 0EJ [www.michaeljones.co.uk](http://www.michaeljones.co.uk)

Offices in Worthing, Lancing, Goring, Findon, Broadwater and Rustington



# Clay Pigeon Shoot - 5th April

Join Guild Care on Friday 5th April 2019 for a day of clay pigeon shooting at Southdown Gun Club. All funds raised will be used to help local children and adults in need.

You can enter in teams of up to four people or come along on your own and we will team you up.

The event will start at 9.00am with a breakfast, safety briefing, warm-up, and full instructions. The first squad will then kick off at 10.30am. The event, which includes a break for lunch, will run until 3pm.

Registration costs just £125 per player. This price includes all clays, cartridges, personal protective equipment, breakfast rolls on arrival, unlimited tea and coffee, and lunch.

If you have any queries or would like to book, please call our Fundraising Team on 01903 528613 or email [fundraising@guildcare.org](mailto:fundraising@guildcare.org).

Auds Stapleton  
Community Fundraising Officer

Guild Care Centre,  
Methold House, North Street, Worthing, West Sussex, BN11 1DU  
Telephone: 01903 528613    [www.guildcare.org](http://www.guildcare.org)

---

## IT'S 20 ! (Mph)

Last year a 20mph scheme was introduced into the Village. This was in response to a majority of Villagers asking for it in the early stages of the Findon Neighbourhood planning process. It was also driven by an incident where a mother was "clipped" by a passing vehicle on School Hill.

It seems as if this 20mph limit goes unrecognized or disregarded.

In the last two weeks my family have two incidents where drivers have failed to adhere to the limit. The first, in the

## Clive Ball

Village Square was a Range Rover who, despite calls to slow down, sped up the Horsham Road, then turned round and came back to rudely demand why they had been shouted at. When I tried to explain why I had called after them I was met by a rude response. They then pointedly sped off.

The second incident was far more serious. On Friday 4th Jan my wife and son were walking down Nephote Lane when an Audi SUV came speeding towards them. My son gestured with his hand for the driver to reduce his speed.

*continued on next page* ►

◀ *continued from previous page*

He did not. My son repeated the action and as the driver went past my son the car's wing mirror hit his hand. The driver then stopped in the middle of the road, got out of his car and started accusing my son of damaging his vehicle, was going to get the police, and started demanding who they were and where did they live. This terrified my wife. My son pointed out that the driver was speeding: "I was doing 30mph" was the reply. My son pointed out he had stopped his car beside a 20mph sign which failed to have any impact. The driver then started to follow my son and wife, taking photos

with an iPad. This went on for 20-30mins. His behaviour was intimidating, threatening and bullying. Other villagers also witnessed this event. It has been reported to the Police and to the Parish Council.

These are just two instances. Using Nepcote Lane daily I frequently witness speeds in excess of 20mph. These are not boy racer drivers. Most tend to be drivers 40 years & upwards, they tend to be in German vehicles (who I swear must have their speedos calibrated to a different standard) and/or SUV type vehicles.

continued on next page ►

---

## 90th Birthday Thanks

I would like to thank all those many friends from the church and village who sent me cards when I celebrated my 90th birthday in December. My family were amazed at how many I had received.

I celebrated with a wonderful Sunday Lunch in the house at Cissbury with my four children, adult grandchildren plus spouses and twelve great grandchildren aged ten to 2½ weeks.

It was a beautiful sunny day, the house was decorated for Christmas, plus tree. We had champagne and canapés in the drawing room and then an excellent lunch, with a wonderful view up to Cissbury Ring, in the sunshine, from the beautifully laid table in the dining room. My great grandchildren had their own specially laid table in the hallway plus a couple of high chairs and a nanny!

My family had organised a photographer so I have a lovely memento of the day.

My late husband Denis & I moved to Findon in 1981 and I would like to take this opportunity to say that we couldn't have chosen anywhere better. We did "B & B", plus dinners sometimes, for over 20 years and both were very involved in the many activities here.

Denis was one of those who looked after the grounds at the Village Hall and together we walked the local footpaths to make sure the farmers had kept them clear. I joined the Village W.I., was on the committee for many year and was Secretary and then President. It is lovely now to just sit back and enjoy our meetings!

Thank you all again.  
Jean Lloyd



◀ *continued from previous page*

The point of this report is simple; To remind villagers a 20mph speed limit exists and to ask it is adhered to. Drive in a manner that suit the road, that respects and is considerate to other road users (pedestrians, horse riders, cyclists). The Gov.UK website Highway code section states: *"You must not drive faster than the speed limit for the type of road and your type of vehicle. **The speed limit is the absolute maximum - it doesn't mean it's safe to drive at this speed in all conditions..**"*

There is also Operation Crackdown operated by Sussex Police that allows residents to report anti social ( eg speeding driving): <http://www.operationcrackdown.org/>. Serial reports concerning the same registration number results in the police contacting the registered owner.

As a final thought I'll leave you with this: A lot of the village does not have pavements, there are equestrians, ramblers, elderly residents going to the Village Shops, dog walkers, children on bikes. What is it going to take to get people to adhere to the limit – a fatality?

---

## Light up The Square 2018

We hope that you all enjoyed the Christmas lights this year - we have had so much positive feedback from Villagers of all ages, which makes the hard work by our committed team of volunteers worthwhile. The Switch On event was very well supported, with the Findon School choir providing a wonderful performance. Our raffle also proved to be very popular and thanks go to everyone who bought tickets for this important fundraiser.

The lights display couldn't happen without Gez Parton of Zebra Property Services, who spends three long days in the cherry picker, mostly in cold and windy conditions - he is a real star. Sincere thanks also go to Southern Cranes and Access Ltd for their generous donation of the cherry picker, particularly so this year when it became necessary to extend our time of use of

the equipment. Further thanks go to Nick in Peckhams Butchers for selling raffle tickets and kindly donating the turkey prize. Also to the Village Store team for ticket selling.

Our Committee would like to express our gratitude to the Parish Council and Sheep Fair Committee for the generous donations which help to ensure that this popular new tradition can become a regular annual event.

2018 Raffle winners were as follows:

1. Dan Allen - Hamper
2. Mr Bond - Turkey
3. Hilary Langford - Coffee machine
4. Terry and Jo Page - Port and stilton
5. Mo Bowen - Port and stilton
6. Zoe Bartlett - Action camera
7. Chris Reed - Drinks flask
8. Fiona - Mulled wine
9. Helena Buque - Prosecco

Village House Hotel  
The Square  
Findon Village  
BN14 0TE

# Village House

Tuesday Nights: *Pizza & a Pint*

Just £10

~~~~~  
Wednesday Nights: *Thai*

2 Courses £16-95

Great Food ~ Great Beer ~ Great Place to be.....anytime

## ***NEW: Mid Week***

***2 Course Lunch £12.95***

***Kids meal deal £7.95***



*Great Roasts  
Every Sunday*

**01903 873350**

facebook @Findonvillagehouse

www.villagehousefindon.co.uk

## Profile of a Villager: Maggie Martin

Born in London, I moved to Sussex and married John in 1970. Our children Jenny, James and David grew up in Durrington where John worked at Nissan. I was a full time Mum until returning to work at Southern Water in 1988.

I love animals, especially dogs, and became a Cinnamon trust Volunteer. My other love is art and I graduated from the Society of Botanical Artists.

In 2001 we moved to Cornwall where we ran a Bed and Breakfast and cake business. Happy times, but our sons were now in Sussex so we decided to return. It is even easier to visit our daughter, now living in France, from Sussex.

We had always loved Findon with happy hours walking on Cissbury and meals in our favourite restaurant 'La Padella'. We found our perfect cottage in 'The Willows' in 2010. Our garden is tiny but our son rightly said "Mum the whole village is a garden!"

The villagers welcomed us warmly. Everything from the village hall to the walks, the pubs to the village shop, but especially the people, is amazing.

I started a Cinnamon Trust Group which many of you support and we have been here for nine happy years. Thank you for the way you welcome newcomers and look out for each other. May this community continue to thrive for ever!

---

## Tea Rooms/ Cafe's to talk about - Some of our favourites

Graham & Hilary Langford

Spring Gardens Nursery Cafe

Washington, Pulborough RH20 3BS - 01903 892225

Open Mons - Sats 9am – 5pm, Sunday 10am – 3pm

A group of us met for a delicious lunch at Spring Gardens cafe recently, and I would certainly recommend a visit. A lovely informal setting with a farm shop attached. Pick Your Own when available.

### The Milk Churn - Tea Rooms

The Brickworks, Kiln House, 4 Lynwick St, Rudgwick, Horsham RH12 3DH

The Home of the "Sussex Charmer Cheese" that is sold in Findon Village Store.

The cheese is made from milk produced on the farms 1200 cows.

Their Speciality is Cheese on Toast.

Open seven days a week (but check opening times around Christmas and New Year).

It is not too far to travel for lunch or tea.

Their mobile food outlet was seen at the West Grinstead Ploughing Match in September selling delicious Cheese on Toast.

Do you have any favourite venues to recommend?

Please let Findon News know and share it with others. Ed.

# Sewsilver

28 Guildbourne Centre, Worthing  
(opposite Wilkinsons)

## Beautiful, Affordable Jewellery & Gifts

- Stunning sterling silver jewellery
- Contemporary titanium, steel & leather jewellery
- Unusual and unique gifts & greetings cards for all occasions

Tel: 01903 218994 [www.sewsilver.com](http://www.sewsilver.com)

## KJ ROBERTS

### Property Maintenance and Electrical services

Friendly locally based tradesman. Interior/exterior decorating, tiling, flooring, bathrooms, kitchens, decking, patios, fencing and any odd jobs.

All Electrical work undertaken. No job too small, Free estimates.

**Tel Findon 873913**

**mobile 07947233424**

**Email [jankevrob@aol.com](mailto:jankevrob@aol.com)**

## UNABLE TO TEND A LOVED ONE'S GRAVE

A service Tailored to your Requirements and pockets, we can do it for you.

Findon / Worthing area

For a leaflet, more information

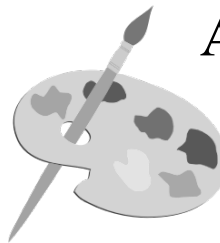
or to arrange an appointment

Please call G. C. F. Services

Tel : 01903 873813 or 07785230913

email : [gcfgraves@aol.com](mailto:gcfgraves@aol.com)

website : [www.gcfservices.com](http://www.gcfservices.com)



## Art Classes For All

Providing a bespoke service for all abilities.

- Practice drawing skills
- Explore different Media

Small social workshops in a home studio

Above all lots of fun, coffee and cakes!

**Please contact Anthea:**

**[antheablackmore1@gmail.com](mailto:antheablackmore1@gmail.com)**

**01903 882226 / 07817 565472**

# Pure

Locally produced chocolate truffles without any colourings, additives or preservatives.

Free delivery to  
Findon village

## Chocolate Truffles



[www.purechocolatetruffles.co.uk](http://www.purechocolatetruffles.co.uk) or contact Kim on 01903 873829

## Volunteering in Findon Ed Wain, Findon Village Volunteer

Here in Findon earlier this year I joined the Findon Village Volunteers. I can loosely say I made the 'mistake' of observing Robin and Del cleaning a street sign opposite The Black Horse pub it looked so easy!

"Can I help?" I said and within a moments breath I was promptly handed a green vest and asked to report for duty the following morning. We've all been there getting caught out on the hop! Volunteering is fun and the rest is history.

We've all been hard at work, we can never have enough help or too many hands. Joining us costs you nothing, no monthly, quarterly or annual membership or subscription. Just fresh air, mindfulness and well being gets through those mid week moments. Even if you decide to help one morning for an hour and not the next it's OK. You'll be joining a friendly group, guaranteed never to have a dull moment with job delegation or even a diverse conversation!

The highlight of the morning is our Tea break at 11.00am and job done by 12 Noon. On a rare occasion, how many of Lyn's homemade sausage rolls or marble cake can you eat?

In building the bonfire for the school we teamed up with local residents in moving old structural wood demolished from part of the village hall to the school grounds for the Findon Fantasia Fireworks. I came across some hidden dates written in pencil. On the back of a staircase a carpenter had written June 2nd 1938 presumably when they built the rear of the hall? Another date penciled on a foldable wooden

card/bridge games table inventory marked FVH 1968.

Whether you're looking for a social chat or inspiration to get you moving FVV needs you! Give your time when you can and thank you in advance for your volunteering .

Regards,  
Ed Wain  
Findon Village Volunteer

Please join us  
this Wednesday 9.30am start.  
Contact Robin Carr for further  
details:  
Email: [grdcarr@outlook.com](mailto:grdcarr@outlook.com)  
Alternatively, Call my landline  
01903 877772 - leave your name  
and contact number for me to call  
you back.  
Text me: Ed 07952 406012  
I'm contactable on WhatsApp,  
Messenger & Instagram  
#ed\_\_wain, #findonvillagevolunteer  
and post your snapshots here too!

### **Bob Hendy Electrician**

Installation / Re-Wiring  
Security Lighting  
Fault Finding

***24 Hour service  
No Call Out Fee***

**01903 877204  
07850771246**

# Fairy Dusting

## Domestic Cleaning Services



*"I love the jobs that most people dread!"*

**CRB Checked**

**Fully Insured**

- ✓ Free quotations & tailor-made services to meet your needs
- ✓ Flexible schedules - weekly, fortnightly or monthly
- ✓ Can provide own equipment or use yours
- ✓ References available on request

**Call NOW - 07745 635320**

Teena Dowling, Rustington, West Sussex

**[www.fairydusting.co.uk](http://www.fairydusting.co.uk)**

**email : [fairy.dusting@outlook.com](mailto:fairy.dusting@outlook.com)**

### R J Maslin Of Worthing

- \* Traditional French Polishing \*
- \* Antique Preservation \*
- Modern & Antique Furniture
- \* Restoration & Repairs \*

**Tel: 01903 719879**  
**Mobile: 07743528139**

### Tom Langford Services

Plumbing, Heating, Drainage, Gas

Free Estimates ~ 24 hour Callout

Small Job Specialist

**Gas Safe Registered**

**07836 479493**

### Astracolour Photographic and Picture Framing

(Eric Beadel L.M.P.A & Edward Beadel - Partner)

[www.astracolour.co.uk](http://www.astracolour.co.uk)

We specialise in Wedding photography and picture framing.

A full portfolio is available to view.

Tel: for an appointment day or evening.

Copying and restoration of your old photo's  
and instant passport photographs (4 for £8.00)

35 The Quadrangle, Findon Village Tel: 01903 877677

# AROUND THE VILLAGE



by Richard Bell

## Findon Film Nights

Friday 15th February

On Chesil Beach

\*\* Starring \*\*

Billy Howle      Saoirse Ronan  
Andy Burse

15

Tickets (on the door) £5

Doors open: 6.30pm

**Findon Village Hall**

Raffle ~ Café ~ Ice Creams



## Messy Church

The next Messy Church  
is

**5 February  
at 3.30pm**

in Findon Village Hall.

All children and their  
grown ups welcome.  
For more information  
please ring The Rectory  
on 873601

**Additional Film Night in 2019**  
Friday 15th March - The Book Club.



# Local Freelance Hairstylist



## Wig Stylist & Wig Supplier

Hair & Wig services provided in the comfort of your own home

**Services:** Colouring Services, Cut & Blow dry, Hair Up, Keratin treatments, Sets, Perms, Wig consultation/fitting and styling



All Colours are Organic, and Vegan friendly - Organic hair products used

Member of The Freelance Hair Association &

MyNewHair (charity for medical hair loss sufferers)

**Call Rita on 07881 863271**

[www.hairs2uworthin.co.uk](http://www.hairs2uworthin.co.uk)

**FB: Hairs 2u -Rita**

*Fully Qualified*

*Fully Insured*

# VIV'S

*Help in the home*



**ARE YOU ELDERLY, DISABLED or maybe recovering at home from being in hospital and need that little bit of help or simply a hand with the everyday running of your home?**

I offer a reliable and a one to one personal service. I have over 20 years experience and references are also available.

Please call Viv on **01903 778552**

**I can help with:**

- ✓ Spring cleaning
- ✓ One-off cleans
- ✓ Light meals

**Assistance such as:**

- ✓ Making beds etc
- ✓ Weekly or fortnightly cleans
- ✓ De-cluttering



## ALLCLEAR GARDEN SERVICES

- \*\* Lawn Mowing \*\*
- \*\* Hedge Cutting \*\*
- \*\* Garden Tidy's \*\*

**CONTACT: Wayne Hardie**

**TEL:- 07733105548**

email: [whardie09@btinternet.com](mailto:whardie09@btinternet.com)

## FINDON SMALL WORKS BUILDING COMPANY

FLINTWORK SPECIALIST, BRICKWORK, RE-POINTING, PAVING & PATIOS, EXTENSIONS, LANDSCAPING, FENCING.

**CALL PAUL**

**07939 210354 or 01903 872147**



When I retired in 2007 I decided to create a garden that would flower for 365 days a year. I wanted beauty but also tranquillity. I say “flowers”, but the real aim was to create a picture of intrigue and excitement even if there was not a single flower in sight. There are so many plants that are full of interest due to their colourful leaves, their shape and form; even their dead flower heads.

In August 2017 we moved into Findon Village and I was so excited to have new borders to play with using all that wealth of knowledge and experience and cutting out the need for trial and error. As we grow older we do not have the luxury of time to find out how it will look next year! I knew the size of plants, which ones went well together, their flowering times, their ease of maintenance and their preferred situations. I also brought with me 101 sample plants from my old garden, some as little as two to four inches tall.

At the front of our new bungalow, there is a white wall with a west facing border which was crying out for Pittosporum

“Tom Thumb”, with its small, vibrant blacky-red, glossy evergreen leaves. And it can be clipped into a compact dwarf round bush for added emphasis. I wanted white next to the black in winter such as snowdrops flowering for six weeks. Then I discovered a new alpine plant called Saxifraga “Alpino Early White”. The flowers on this tight hummock of moss green are larger than usual with a much longer flowering season. I bought it in May in full bloom and fell in love with it. Our clump of Saxifraga in our previous garden was home to a slow worm, which loved basking on top of it when the sun was out. The plant lasted many years and was a constant source of enjoyment with or without flowers, until magpies started to attack it and throw the mossy clumps all over the place and then it had to go.

I placed my new “Alpino Early White” to the north side of the Pittosporum providing shade and a cooler root run and it settled in so well that new flower buds started getting ready just before Christmas day. Wonderful.

---

## Paws For Thought

### Parasites

Parasites can cause significant disease with debilitating effects for pets. Some can also have an impact on human health.

Their ability to hide, survive and multiply make them pretty impressive pests, but not the kind of things pets and pet owners want in their homes!

Thankfully most parasites that affect pets can be treated or prevented. That's why parasite control should be a priority for all pet owners.

Whilst most pet owners know they need to treat their pet regularly, it's a misconception to think that this is only as the weather starts to warm up and

*continued on page 27* ►

**your  
community  
vet**

Expertly caring for dogs, cats and other domestic pets in West Sussex for over 35 years!



-  Puppy & Kitten Clinics
-  Microchipping & Pet Passports
-  Orthopaedic, Spinal, Soft-tissue & Reconstructive Surgery
-  Laparoscopic (key-hole) Surgery & Advanced Laser Therapy



 **NEW Extended Vet Consulting Hours**

We've increased our weekday consulting hours, ensuring our clients have greater access to the vets at the most convenient times.

 **Introducing Pet Health Plans**

**Simple, affordable & money-saving**  
A proactive, preventive approach to your pet's healthcare. Please visit our website for more info.

43 School Hill  
**Storrington**  
01903 743040

179 Findon Road  
**Findon Valley, Worthing**  
01903 877325

2 High Street  
**Steyning**  
01903 816428

[www.crosswaysvets.co.uk](http://www.crosswaysvets.co.uk)

**For all your home water needs,  
speak to the professionals - UKh<sup>2</sup>o**

**Water softeners**

installation, servicing and salt

**Filtered drinking water systems**

and boiling water taps

**Kitchen and bathroom design**

plus installation

**Heating and plumbing services**



**01903 500 551 | [www.ukh2o.com](http://www.ukh2o.com)**  
50 Ferring St, Ferring, West Sussex BN12 5JP



◀ *continued from page 25*

that they do not need to keep up protective treatment during the cooler months.

In recent years, the tick population in the UK has started to feed earlier in the year, and continue for longer due, to increasingly warm, wet winters. Fleas are also becoming a year-round problem, as a centrally heated house with pets provides a warm home with a constant food source.

It's also important to understand that as your dog or cat grooms, if they eat a flea which is infected with tapeworm, this can lead to other problems.

Helping owners to understand how to prevent and treat parasites is an important aspect of a vet's work. The vet has the knowledge to be able to

give the best advice to ensure your pet gets the right treatment at the right time.

Without this advice you could be giving your pet the wrong preventive product and unintentionally causing harm to your pet.

Many veterinary practices have a Pet Health Plan that will cover most preventive care for a pet with the cost broken down into monthly payments. For my practice our plan covers ticks as well.

Imogen Wainwright-Jones  
Crossways Veterinary Group  
179 Findon Road  
Findon Valley  
01903 877325

**DOVETAIL**  
*Kitchens*

The  
little kitchen company  
with big results!

Pop into our homely showroom with our six best selling kitchen ranges on display and let us put a smile on your face with our prices

Customer in Angmering



Customer in Angmering



Family run local business • Design & full installation • Dry fits/Supply only  
• Removing walls to create open plan • Bi-folds, sky lanterns, orangeries

**We are on Long Furlong, directly opposite Clapham Village hall**

Gosling Croft Business Centre,  
Long Furlong, Clapham, West  
Sussex BN13 3UT

Please call: **01903 871 115**  
[www.dovetail-kitchens.co.uk](http://www.dovetail-kitchens.co.uk)

Our 2019 diary  
is now open and  
taking bookings so  
don't delay!





**broadwater osteopathic practice**  
*exceptional treatment from head to toe*

**Exceptional care by an experienced, friendly team.**

**Weekend & evening appointments.**

**Free onsite parking.**

**£5 OFF**

**Mention this advert & receive £5 OFF your visit to BOP\***

*\*T&Cs apply (selected therapists only)*

Osteopathy, Cranial Osteopathy, Sports Therapy, Chiroprody, Hypnotherapy, Counselling, Homeopathy, Bowen, Emmett, Massage, Acupuncture...& much more!

**2 Sompting Road, Worthing BN14 9EP 01903 820206**

**worthingosteopathy.com**

## **THE MALAYSIAN TEA COMPANY**

**FINDON BASED & SELLING SINGLE ESTATE PREMIUM QUALITY TEAS**



**Tea Bags:** These double-chamber black-tea bags use the finest Orange Pekoe tea leaves  
Also available as Earl Grey and in other Fruit flavours.

**Loose Leaf Black Tea:** Available in both Orange Pekoe & BOPF (Broken O P Fannings)



**GROWN IN THE CAMERON HIGHLANDS SINCE 1933  
AVAILABLE NOW AT FINDON POST OFFICE**

**CAMERON VALLEY MALAYSIAN TEAS  
ONE KUALA LUMPUR OR TWO?**

## Breakfast at Julia's (Kitchen)

Roger Dean

Monday 11th December saw 2018's final Men's Group breakfast. Nineteen of us turned up at (or before) 9.30 at Julia's marvellous, welcoming establishment for a proper full English – sausage, bacon, egg and all the trimmings.

How they manage to get it to all of us so perfectly fried and hot, whilst not neglecting the other customers who venture in I can't imagine. I say "venture in" because they either have to shout to whoever they're with or resign themselves to eating in silence, as it can get to be pretty lively in there, with everyone chatting with the 4 or 5 people around them and laughing at the frequent quips and puns from an unusually humorous bunch of blokes.

Just shows you what a boon a Findon retirement is. Last week we got an email from Graham asking us to turn up in Santa garb. Just one of us had a Christmas sweater, but many more had obviously been to the garden centre and bought musical Santa hats, so not only



was there the usual merry laughter, but also the raucous sound of "Me-e-e-erry Christmas!" accompanied by the twitching of the tassels on the hats.

Ah, come on, it's Christmas only once a year! If you like good company and good coffee, too, why not come along and meet us – at 10.30am on Mondays for most of the year – the highlight of the week for many of us!

---

## Praise and Worship Services

Graham Langford

**On Sunday 3rd February**

Family music group from the Storrington Community Church.

The Praise and Worship services have been well attended and the music led groups have provided uplifting services.

If you haven't been before you will be made very welcome. It is a very

informal service and starts at 10.00 am. and finishes 10-45 am with refreshments.

If you need a lift please phone the rectory 01903 873601

---

**200 Club**

**Bob Eastabrook**

The £25 winner of the January 200 Club draw is number 054 - M Grand

## Paws Animal Sanctuary

We try to take in all the stray cats that people report to us, this cold weather the poor cats need help. A big problem then is when we have to have them neutered or spayed before we can find them a new home. Of our two new arrivals, two were obviously already pregnant, and the other two we had spayed this week.

Also, a family were being evicted and we were asked to take their puppy. She was limping and the Vet said she needed an operation on her hip, also, vaccinating and micro-chipping! We had all that done, and she now needs Hydrotherapy. She is 14 months old so also, soon needs to be spayed.

Our huge Vet bills keep us poor. When I lived in Kent, we were very lucky there was a Blue Cross Vet who everyone took their animals to. You were asked to just put a donation in the box. If you google the map The Blue Cross still exist all over the country but not in the South. These days Vets bills are so high pet owners seem to avoid taking their animals to the Vet unless they are ill or injured. When we are asked to take in the older cats nearly all of them need teeth treatment costing around £300. Even Flea and Worm treatment is expensive these days.

When people ring us to report they have lost their cats we ask if they are microchipped or neutered, we hear repeatedly that owners didn't have them done because they are indoor cats and live in a flat. We have so many strays that don't get claimed because their

owners would not spend the money neutering or microchipping their cats. We make sure before we let any of our kittens go they have all their inoculations and are microchipped.

We have been swamped with Guinea-pigs arriving since Christmas. Luckily female Guinea-pigs are not often aggressive so we can put lots of them in together we have a large walk in pen with nine in, that all live happily together.

Our most cheerful and reliable Volunteer was 90 last week! (I don't ever remember her having a Sunday off in all the years she has run our Charity shop). Our Thanks and Congratulations to GLAD, we all enjoyed the secret surprise party and wonderful hot food and hot soup on such a cold night at The Village House in Findon.

I can't wait for the hot weather, I had to break the ice on the horses' water trough this morning.

Stacey

Paws Animal Sanctuary Findon  
15 The Oval, Findon Village  
West Sussex. BN14 0TN  
01903 872 734 / 0790 447 6819

We never use an ansaphone so keep trying someone is always around.  
7days a week.

Open to Visitors 12-4pm Sundays.  
email: [pawsanimals@hotmail.co.uk](mailto:pawsanimals@hotmail.co.uk)  
[www.pawsanimalsanctuaryfindon.co.uk](http://www.pawsanimalsanctuaryfindon.co.uk)  
Registered Charity 1096231

## Findon Planning Applications

Planning applications for Findon are under the authority of South Downs National Park and listed on the SDNPA website ([www.southdowns.gov.uk](http://www.southdowns.gov.uk)). Findon Parish Council (FPC) Planning Committee meetings are scheduled monthly to consult on planning applications received from the South Downs National Park Authority (SDNPA). Parish Consultation Letters (PCL) received from the SDNPA are displayed on the Notice Boards outside the newsagents and the Village Hall, and published on the FPC website (<http://findon.arun.gov.uk>) along with the schedule of Committee meeting dates. Please note that due to Findon News publication deadlines, some applications may have already been placed before the Committee. Residents should check the Notice Boards and FPC website regularly to view notices and meeting details. Any enquiries should be address to the FPC Clerk - 01903 877225.

Since the last issue of Findon News, the following Planning Applications have been posted on the SDNPA website:

**Continued occupation of the dwelling in non compliance with the occupation condition (2) on planning permission FN/83/90. The condition**

**requiring the occupation of the house by persons employed or last employed at Kingswood Livery Stables or locally in agriculture or forestry.**

Meadow View Horsham Road Findon  
Worthing West Sussex BN14 0RG  
Ref. No: SDNP/18/06499/LDE

**Change of use to equestrian: livery stables and riding school and associated works. The development includes: i) Change of use of stable buildings from equestrian: stabling of race horses to equestrian: livery stables and riding school ii) Change of use of agricultural fields to equestrian use: keeping of horses incorporating the erection of fences iii) Creation of equestrian arena (Manege) and erection of associated floodlights (x8) and covered seating area iv) Conversion of small barn to staff room / office / lecture room incorporating physical alterations v) Creation of pedestrian path from existing car park to proposed arena and associated ground lighting vi) Conversion of store to stables incorporating installation of new door**

Cissbury Nepcote Findon BN14 0SR  
Ref. No: SDNP/18/05896/FUL

---

### Light Lunch @1pm

Last Tues of the month - Next Lunch 29<sup>th</sup> February  
at Findon Village Hall. - £5. - Everyone welcome.



## Findon Downs WI

Jill Schiller

Our next meeting will be held in the Village Hall on **Tuesday, 12th February at 2.30pm**. The Speaker will be Lesley Boardman "The Island of Forty Thieves-Bermuda"

Exhibition: A knitted Scarf.

On **Saturday, 16th February**, our **JUMBLE SALE** will be held from 10 am - 12 pm in Findon Village Hall. Entrance 50p.

If you wish to donate any items other than large furniture or electrical goods, please contact Jill on 07734453303 or 01903 872483.

Come along and grab a bargain.

---

## Findon Village WI

Sadly, one of our long standing members, Molly Fishwick, died in November. Molly had been a member of our WI for almost 30 years, and was a regular member of the Monday darts group. Molly celebrated her 90th birthday in August where some of our members were guests at her birthday party. At our August afternoon tea we all sang "Happy Birthday" to Molly and gave her flowers which were really appreciated.

Our December meeting was a very enjoyable skittles evening at the Black Horse. Jean Lloyd was presented with a bouquet of flowers to celebrate her 90th birthday and Tracy was presented with a gardening voucher as the 2018 competition winner.

The January Fun Auction was held later than normal, due to village hall works, with the money raised going to charity.

Our next meeting is a talk on the Dog's Trust presented by Pia Offord on 14th February. And, as it's Valentine's day the competition is anything heart shaped.

## Paddy Winter - President

The next coffee morning at Julia's Kitchen is 21st February from 10.30 – all welcome.

Wishing all past, present and future members a very Happy New Year

Visit our website –

[www.findonvillagewi.wixsite.com/mysite](http://www.findonvillagewi.wixsite.com/mysite) or find us on Facebook - Findon Village WI for the latest information of our various groups or email: [findonvillagewi@hotmail.co.uk](mailto:findonvillagewi@hotmail.co.uk)





**Findon, Clapham & Patching Churches - February 2019**  
*Walking together in the Way of Christ and sharing His love with others*

|                                    |         |                                    |
|------------------------------------|---------|------------------------------------|
| <b>Sunday 3<sup>rd</sup> Feb</b>   | 8.00am  | Eucharist at Findon Church         |
|                                    | 10.00am | Worship and Praise Service Findon  |
|                                    | 10.00am | Sung Eucharist at Clapham Church   |
| <b>Sunday 10<sup>th</sup> Feb</b>  | 8.00am  | Eucharist at Patching Church       |
|                                    | 9.30am  | Sung Eucharist, Findon Church      |
| <b>Sunday 17<sup>th</sup> Feb</b>  | 08.00am | Eucharist at Findon Church         |
|                                    | 09.30am | Family Communion at Findon Church  |
|                                    | 10.00am | Sung Eucharist at Patching Church  |
| <b>Sunday 24<sup>th</sup> Feb</b>  | 08.00am | Eucharist at Clapham Church        |
|                                    | 09.30am | Sung Eucharist at Findon Church    |
|                                    | 10.00am | Family Service at Patching Church  |
| <b>Sunday 3<sup>rd</sup> March</b> | 08.00am | Eucharist at Findon Church         |
|                                    | 10.00am | Worship and Praise Service, Findon |
|                                    | 10.00am | Sung Eucharist at Clapham Church   |

**Afternoon Plus** - 3<sup>rd</sup> Thursday of the month at 2.30pm. Different events every month, details on the pew sheets or contact the Rectory Office.

**Light Lunch @ 1pm** - Last Tues of the month, at Findon Village Hall. £5. Everyone welcome.

**Curry Nights** - Findon Tajdar Curry Nights are the first Monday of the month, 4th February 2019 at 7.00pm (Ladies) and the last Thursday of the month, 28th February 2019 (Men) at 7.30pm

**Quiet Time** - 2nd Monday each month, 11th February 2019.

**Youth club** - Every Thursday, with different themes every week (during school term time only). Ages 12+, 5pm till 6.30pm at The Rectory, Findon.

**Messy Church** - 1st Tuesday of the month (5th February). TERM TIME ONLY. Starting at 3.30pm-5.45pm at Findon Village Hall. All children and their grown-ups welcome.

**Ladies Coffee Mornings**  
**Every Tuesday 10.30am**  
**@ Julia's Kitchen**  
**Everyone welcome**

**Curry Nights** - All welcome  
 The next Curry Nights at  
**The Tajdar Restaurant**  
 Ladies - Monday 3 Dec @ 7.00pm  
 Men - Thursday 31 Jan @ 7.15pm

### FOX LEA £825,000



An impressive and most appealing five bedroom Detached Residence in sought after location.

### CONVENT GARDENS £535,000



A substantial, well appointed three bedroom House constructed in 2000.

### HIGH STREET £329,950



A most appealing and delightfully located cottage-style two bedroom Semi-Detached Bungalow.

### THE SQUARE £310,000



A most impressive, spacious two bedroom Ground Floor Apartment, beautifully refurbished, offering much character and charm.

### CROSS LANE £259,950



A charming bijou 17<sup>th</sup> Century one bedroom Detached Cottage in the heart of the village.

### POYNINGS COURT £245,000



A spacious, rarely available two bedroom Ground Floor Flat with private rear garden.

## Village Hall February 2019

For all booking enquiries please  
Email [findonhallbooking@gmail.com](mailto:findonhallbooking@gmail.com)

| <b>Weekly</b>           | <b>Day</b> | <b>Time</b>   |
|-------------------------|------------|---------------|
| Carpet Bowls            | Monday     | 14:30         |
| Lambstails (Term Time)  | Thursday   | 10:00 – 12:00 |
| Line Dancing            | Wednesdays | 09:45         |
| Danceaholics            | Sunday     | 19:30         |
| Just Yoga               | Monday     | 10:30         |
| Tai Chi                 | n/a        | 10:00 – 13:00 |
| You Yoga                | Tuesday    | 18:45         |
| Reduce                  |            |               |
| Stress & Stiffness Yoga | Wednesday  | 19:30         |

| <b>Fortnightly</b> | <b>Date</b> | <b>Time</b> |
|--------------------|-------------|-------------|
| Circle Dancing     | 11th , 25th | 19:10       |

| <b>Monthly</b>      | <b>Date</b> | <b>Time</b> |
|---------------------|-------------|-------------|
| Bead Magicians      | 19th        | 09:00       |
| Downs WI            | 12th, 16th  | 14:30, 9:00 |
| Gardens Association | 22nd        | 18:30       |
| Messy Church        | 5th         | 15.30       |
| Village WI          | 14th        | 18:45       |
| Meditation          | 18th        | 19:30       |
| Tastevin            | n/a         | 19:00       |
| Light Lunch         | 26th        | 12:00       |
| 200 Club            | n/a         | 18:00       |

**Committee Room** n/a

| <b>Other Events</b> | <b>Date</b> | <b>Time</b> |
|---------------------|-------------|-------------|
| Art Class           | 2nd         | 09:00       |
| Film Night          | 15th        | 18:30       |

*Bookings subject to change in relation to building work*

### The Village Hall website

provides contact and booking details as well as listings of forthcoming events

[www.findonvillagehall.com](http://www.findonvillagehall.com)

# curtis and son

Findon's longest established family owned independent estate agents and valuers with an excellent local reputation



- Free valuations
- Local expertise
- Full colour particulars
- Accompanied viewings
- Competitive commission
- Free probate valuations
- Local and national advertising

**01903 264161**

**[www.curtisandson.co.uk](http://www.curtisandson.co.uk)**

156 Findon Road, Findon Valley, Worthing, West Sussex BN14 0EL



'Findon's longest established family owned, independent estate agents and valuers'