



# Findon

March  
2019

Community newsletter for  
Findon, West Sussex  
Including the Church Parish of  
Findon, Clapham & Patching

Editorial team led by  
Nick Gore

# News

*Findon News is published monthly and is available free of charge from various outlets throughout Findon and can be viewed on the Findon Community website - [www.findonvillage.org](http://www.findonvillage.org)  
Findon News does not endorse any advertisements published. No responsibility will be taken for errors, omissions or any claims made by contributors. Opinions expressed are not those of the publisher.*

Articles for publication (**maximum 650 words**) can be submitted by email to [findonnews@zoho.com](mailto:findonnews@zoho.com), or via the 'Findon News Box' in the Village Shop.

**Closing Date for Next Publication : 20<sup>th</sup> March 2019**

## Opportunity to establish a Community Minibus Service in Findon Village - Volunteers Needed

The Community Minibus Association (West Sussex) have kindly offered us the opportunity to share the use of one of their minibuses that currently operates in Ashington but is not fully utilised there. The association is an all-volunteer led charity that has been running Community Minibuses in West Sussex for over forty years.

To take advantage of this opportunity for Findon Residents a small team of volunteers comprising drivers, escorts and an administrator (to enrol passengers as members of the charity, take bookings and liaise with the Ashington branch) is needed.

The minibus is garaged at Ashington so would need to be picked up and returned there at the end of each trip and volunteer drivers will need to have category D1 on their license.

Membership of the Association for individuals wishing to use the service is currently £7.00 per year.

An additional fare is charged per trip to cover running costs, which is calculated according to the length of the journey. Passengers are picked up from and dropped back at their home addresses.

If you are interested in **volunteering** to help establish and operate a Community Minibus Service in Findon Village or in **using** such a service please email [cathrine.gear@findonparishcouncil.gov.uk](mailto:cathrine.gear@findonparishcouncil.gov.uk) or contact the Findon Parish Council Clerk, Fiona MacLeod, by email [clerk@findonparishcouncil.gov.uk](mailto:clerk@findonparishcouncil.gov.uk) or telephone 01903 877225

We look forward to hearing from both potential **users** and **volunteers** so that we can establish the level of interest. Full training will be available to volunteers.

Findon Parish Council working to enhance life  
in the Village for everyone.

View Findon News on the Findon Village website [www.findonvillage.org](http://www.findonvillage.org)

# curtis and son

Findon's longest established family owned independent estate agents and valuers with an excellent local reputation



- Free valuations
- Local expertise
- Full colour particulars
- Accompanied viewings
- Competitive commission
- Free probate valuations
- Local and national advertising

**01903 264161**

**[www.curtisandson.co.uk](http://www.curtisandson.co.uk)**

156 Findon Road, Findon Valley, Worthing, West Sussex BN14 0EL



'Findon's longest established family owned, independent estate agents and valuers'

## From the Rectory

I never had much time for history when I was at school. My interest was always in science, so I gave up history classes at the earliest opportunity. I have come to realise as I have got older just how much I have missed. Our church traditions are steeped in history, rather like the three beautiful churches in our parish.

As March begins I am particularly looking forward to enjoying some pancakes on Shrove Tuesday (5th). It is so called because of a tradition dating back at least 1000 years of shroving the faithful, a time of confession and absolution in preparation for a Holy Lent. It was a time to finish up all the fats in the larder before the Lenten fast, starting the next day on Ash Wednesday. This year we are going to have a pancake theme for Messy Church and coincidentally Bishop Mark, our area bishop will be with us as part of his deanery visitation. I hope he likes pancakes, but who doesn't!

It is easy to think of Lent as a season to be endured and rather joyless. A time of hair shirts and self-discipline. We often think about giving up something we like for the 40 days that it lasts.

Instead it would be better to think of it as a time of preparation for the celebration of Easter, the most important event in the Christian calendar. Most big occasions, like an annual holiday require some form of preparation. We might have to sort out inoculations, currency, airport parking and the like. The season of Lent has been a preparation for celebrating Christ's resurrection and our salvation since the early church. It started out as a time of preparation for baptism which normally

took place on Easter Sunday, but somewhere between the 8th and 10th century it was widened to include the whole congregation. It is good to have a time of taking stock of our lives and perhaps to make amends where we have fallen away from following Christ with our whole heart.

On Ash Wednesday many of us will go to church and be marked with the sign of the cross on our foreheads using the ashes of last year's palm crosses. In imposing the ashes the priest recites the words 'Remember that you are dust, and to dust you shall return. Turn away from sin and be faithful to Christ'. In the same way that man was created from the dust of the earth one day we will return to the ground again. These evocative words remind us of the transitory nature of this life and that one day we will have to give an account of ourselves to our loving Lord.

Each year, to help us prepare for Easter we run a short five-week course. This year we will be using the Diocesan offering which explores the concept of vocation. It looks very good and includes video clips and discussion. We are offering two options, 7.30pm on Wednesdays and 3pm on Fridays. Both will take place at the Rectory. If you have not tried it before why not give it a go this year? You will be very welcome. If you would like to join us please use the sign-up sheet in church or let the parish office know so that we can make sure we have enough booklets for everyone.

With every blessing for a holy Lent,

Colin

Rev. Helena Buqué, Priest in Charge and Colin Cox, Curate:  
c/o The Rectory, School Hill, Findon, BN14 0TR. Tel: 873601  
[findon.rectory@btinternet.com](mailto:findon.rectory@btinternet.com)    [www.findon-clapham-patching-churches.com](http://www.findon-clapham-patching-churches.com)  
**FB:** Findon Clapham Patching Churches



# **broadwater osteopathic practice**

*exceptional treatment from head to toe*

**Exceptional care by an experienced, friendly team.**

**Weekend & evening appointments.**

**Free onsite parking.**

# £5 OFF

**Mention this advert & receive £5 OFF your visit to BOP\***

*\*T&Cs apply (selected therapists only)*

Osteopathy, Cranial Osteopathy, Sports Therapy, Chiroprody, Hypnotherapy, Counselling, Homeopathy, Bowen, Emmett, Massage, Acupuncture...& much more!

**2 Sompting Road, Worthing BN14 9EP 01903 820206**

**worthingosteopathy.com**

# DOVETAIL *Kitchens*

The  
little kitchen company  
with big results!

Pop into our homely showroom with our six best selling kitchen ranges on display and let us put a smile on your face with our prices

Customer in Angmering



Customer in Angmering



Family run local business • Design & full installation • Dry fits/Supply only  
• Removing walls to create open plan • Bi-folds, sky lanterns, orangeries

**We are on Long Furlong, directly opposite Clapham Village hall**

Gosling Croft Business Centre,  
Long Furlong, Clapham, West  
Sussex BN13 3UT

**Please call: 01903 871 115**  
**www.dovetail-kitchens.co.uk**

Our 2019 diary  
is now open and  
taking bookings so  
don't delay!



# **'Findon Parish Council Report**

Findon Parish Council has submitted an annual precept requirement for 2019/2020 to Arun District Council. This is the means by which the Council is able to fulfil its duty regarding services and upkeep of the village on behalf of all parishioners.

The proposal this year is for a modest increase of 3.8% creating a precept of £45k. This figure was calculated following discussion within the Finance and Governance Committee and subsequently ratified by the full Council.

The increase equates to just £1.68 per Band D household for the 2019/2020 financial year.

One element that is new to Findon Parish Council is the development of a 3 year

strategic plan, outlining what the Council aims to achieve over the next 3 years. This will be a live document updated as appropriate and something that will be published on the Council website in due course. As such it will be open to comment and feedback and major projects will be put to the village for consultation in the spirit of openness that localism requires.

Findon Parish Council looks forward to engaging with the village to best serve it's needs in the coming years.

Cllr Sean Smith  
Chairman  
Findon Parish Council

---

## **"What a Load of Rubbish"**

On the 30th January, in glorious winter sunshine, 10 HI Viz clad members of Findons' Open Spaces working party participated in National Litter Clearance week.

Walking the full length of the Findon bypass between Bost Hill, and all the way up to the A24/School Hill roundabout, both north and south verges were completely cleared.

In all the team collected 22 bags worth of rubbish which included plastic drink bottles, tin cans, paper coffee cups etc. In addition, stranger items included plastic shopping carts, milk crates, toilet cisterns, shoes and boots, truck tyres and mangled traffic signs. The photo shows the "booty" alongside a member of our cheery team.

Thanks go to Wyevale Garden Centre for allowing the rubbish to be left on their verge in readiness of Arun DC collecting it.



The work party team meet every Wednesday morning at 09:30 and spend three hours tidying, cutting back, clearing pathways etc in an effort to make the village look tidier. If you would like to join us in making Findon a tidier village please contact the Chairman of the FPC Open Spaces committee at:  
[robin.carr@findonparishcouncil.gov.uk](mailto:robin.carr@findonparishcouncil.gov.uk).

Clive Ball  
Findon Open Spaces Work Party

---

## **Ash Wednesday Services (6th March)**

11am at Clapham Church

7pm at Findon Church.

Both will be Eucharists with the imposition of ashes.





## **Downland Close, Findon Village**

An attractive, well presented detached bungalow conveniently situated in the centre of the Village. 19' lounge/diner with west facing conservatory, fitted kitchen, 2 double bedrooms, refitted shower room/WC, garage, off road parking, attractive west facing rear garden. Viewing highly recommended.

### **Asking Price £450,000**

**Findon Office 01903 872949** 208 Findon Road, Findon Valley BN14 0EJ [www.michaeljones.co.uk](http://www.michaeljones.co.uk)

# Findon Village Store News

It finally starts to feel that Spring is in the air with the arrival of the first of the spring flowers. We have some lovely spring potted bulbs which would be ideal for mothers day on Sunday March 31st. The shop will also have a selection of cards, delicious chocolates and little gifts for the mums.

We also have shrove Tuesday coming up on March 5th, we stock all the items needed to make delicious pancakes. As an alternative to the traditional thin pancakes I can highly recommend this recipe for thick pancakes, they are really delicious and are great for using up your old bananas! this makes approximately 12 pancakes;

175g self-raising flour  
½ tsp baking powder  
½ tsp ground cinnamon (optional)  
2 large egg whites  
1 tbsp caster sugar  
225ml semi-skimmed milk  
1 ripe, medium banana  
1 tsp sunflower oil, for frying  
200g mixed fresh berries, such as raspberries, blueberries, redcurrants and strawberries  
4 tsp agave nectar, honey or golden syrup

*Sift the flour, baking powder and cinnamon, if using, into a large bowl. Whisk the egg whites in a separate bowl until stiff but not dry and whisk in the caster sugar.*

*Stir the milk slowly and gradually into the flour mixture, then beat hard with a metal whisk to get rid of any lumps. Peel the banana, cut it in half lengthways, then into thin slices. Stir the banana slices into the pancake batter.*

*Fold a quarter of the whisked egg whites into the pancake batter with a large metal spoon until evenly combined, then very gently fold in the rest. You want to try to keep as much air in the pancakes as possible, so they are light and fluffy when you cook them.*

*Brush a large non-stick frying pan with a little oil and place it over a medium-high heat. Add 4 large spoonfuls of the pancake batter to the pan, spacing them well apart.*

*Cook the pancakes for 1½ – 2 minutes on one side, until the surface looks almost dry and you can see small air bubbles rising to the surface. Flip the pancakes over and cook on the other side for another 2 minutes until they're puffed up and lightly browned.*

*Pop the pancakes on to a plate and keep them warm while you cook the rest in the same way. Serve the hot pancakes with lots of fresh berries and just a dribble of agave syrup, honey or golden syrup.*

Continued on page 9 ►



## FINDON VILLAGE STORE

### *Post Office & Newsagency*

**Tel:**

**01903 877110**

Groceries; Bread; Cakes; Freshly made Sandwiches;  
Beers, Wine & Spirits; Tobacco; Cards

*Run by the Community for the Community*

**Shop Opening Hours:**

**Mon to Sat 07:00 - 19:00**

**Sunday 07:00 - 12:00**

[www.findonvillagestore.org](http://www.findonvillagestore.org)

**Post Office Opening Hours:**

**Mon to Fri 08:30 - 17:30**

**Sat / Sun 08:30 - 12:30 / 12:00**

[findonvillageshop@gmail.com](mailto:findonvillageshop@gmail.com)

Horsham Road  
Findon  
BN14 0TF



## Local Freelance Hairstylist

Wig Stylist & Wig Supplier

Hair & Wig services provided in the comfort of your own home

FREELANCE  
HAIRDRESSERS'  
ASSOCIATION



**Services:** Colouring Services, Cut & Blow dry, Hair Up, Keratin treatments, Sets, Perms, Wig consultation/fitting and styling

WE ARE  
MACMILLAN.  
CANCER SUPPORT



*Fully  
Qualified*

All Colours are Organic, and Vegan friendly - Organic hair products used

Member of The Freelance Hair Association &

MyNewHair (charity for medical hair loss sufferers)

**Call Rita on 07881 863271**

**www.hairs2uworththing.co.uk**

**FB: Hairs 2u -Rita**

*Fully  
Insured*

# VIV'S

*Help in the home*

**ARE YOU ELDERLY, DISABLED or maybe recovering at home from being in hospital and need that little bit of help or simply a hand with the everyday running of your home?**

I offer a reliable and a one to one personal service. I have over 20 years experience and references are also available.

Please call Viv on **01903 778552**

### I can help with:

- ✓ Spring cleaning
- ✓ One-off cleans
- ✓ Light meals

### Assistance such as:

- ✓ Making beds etc
- ✓ Weekly or fortnightly cleans
- ✓ De-cluttering



## ALLCLEAR GARDEN SERVICES

- \*\* Lawn Mowing \*\*
- \*\* Hedge Cutting \*\*
- \*\* Garden Tidy's \*\*

**CONTACT: Wayne Hardie**

**TEL:- 07733105548**

email: whardie09@btinternet.com

## FINDON SMALL WORKS BUILDING COMPANY

FLINTWORK SPECIALIST, BRICKWORK,  
RE-POINTING, PAVING & PATIOS,  
EXTENSIONS, LANDSCAPING, FENCING.

**CALL PAUL**

**07939 210354 or 01903 872147**



► *continued from page 7*

Since the closing of Hartleys in the valley we are the only stockists of Upper Beedings Riverside Breweries craft beers in Findon and we are proud to support yet another local business. The committee have been busy behind the scenes gearing up for the special events including Easter, planning

improvements to the shop and looking to repeat the successes of last year to ensure we continue to attract and retain happy customers. We're also evaluating an accounting package this month to streamline and improve our financial controls and reporting.

Jo O'Dell volunteer/committee member.

---

## Findon Friends of St. Barnabas

There are a few tickets available for our **'Curry Night and Mini Auction'** at the **Tajdar Restaurant, Findon, on Monday 4th March.**

A really good evening of food and fun!

Following this, our next event is the ever popular **'Fish and Chips and Quiz Evening'** on **Thursday 11th April at the Village House, Findon.**

Tables of six people, tickets £13.50 pp (limited to 48 tickets)

Prizes for winners, and there will be a Grand Raffle!

Tickets for these events are available from:

Richie 01903 877930

or Mike 01903 877255

For Your Tickets > Don't Wait -  
It May Be Too Late!

Mike Solomons

Chairman

Findon Friends of St. Barnabas



Following on from the recent dog attacks:

**Take The Lead  
Campaign**

**Friday 8th March  
Cissbury Car Park**

**Time to be confirmed**

Attending: NFU, Sussex Police  
South Down National Park,  
and a pen of sheep.

Further details from  
Caroline Harriott  
07774 190189

# **Fairy Dusting**

## **Domestic Cleaning Services**



*"I love the jobs that most people dread!"*

**CRB Checked**

**Fully Insured**

- ✓ Free quotations & tailor-made services to meet your needs
- ✓ Flexible schedules - weekly, fortnightly or monthly
- ✓ Can provide own equipment or use yours
- ✓ References available on request

**Call NOW - 07745 635320**

Teena Dowling, Rustington, West Sussex

**[www.fairydusting.co.uk](http://www.fairydusting.co.uk)**

**email : [fairy.dusting@outlook.com](mailto:fairy.dusting@outlook.com)**

**R J Maslin  
Of Worthing**

- \* Traditional French Polishing \*
- \* Antique Preservation \*
- Modern & Antique Furniture
- \* Restoration & Repairs \*

**Tel: 01903 719879  
Mobile: 07743528139**

**Tom Langford Services**

**Plumbing, Heating, Drainage, Gas**

Free Estimates ~ 24 hour Callout

Small Job Specialist

**Gas Safe Registered**

**07836 479493**

## **Astracolour Photographic and Picture Framing**

**(Eric Beadel L.M.P.A & Edward Beadel - Partner)**

**[www.astracolour.co.uk](http://www.astracolour.co.uk)**

We specialise in Wedding photography and picture framing.

A full portfolio is available to view.

Tel: for an appointment day or evening.

Copying and restoration of your old photo's  
and instant passport photographs (4 for £8.00)

35 The Quadrangle, Findon Village Tel: 01903 877677

# Gardening Titbits

Catherine York

The garden looks so lovely, even now at this time of year (4 Feb). There is plenty to see and get excited about with new shoots sprouting on the clematis and fresh new leaves coming on all the roses. Bulbs are coming up and the snowdrops are beginning to flower. I have put some snowdrops in tubs with perennials to keep me going.

The primroses are a delight, so bright and cheerful in the north facing courtyard. Hebe "Heartbreaker" is fabulous in the cold weather with its vivid pink leaves. The colder the weather the more vibrant it becomes. The patio looks colourful with flowering viburnum "Gwenllian", pink hebe "Heartbreaker", silver lavender "Vera", and white spotted hellebore "Connie", all evergreen. After several attempts, I have decided to plant campanula "Muralis" in the patch of earth outside the patio doors, which should be perfect: low growing, evergreen, endless violet bell-shaped flowers and tolerant of sun and shade. Saxifraga "London Pride" seemed like a good idea until its flower heads got squashed when the conservatory door opened! Sedum "Aurea" loved the hot morning sun but was unhappy in the

afternoon shade and looked insipid in the absence of any winter sun.

All the Hellebores are in full bloom now and the two white ones were flowering in time for Christmas along with lovely pink cyclamen "Coum", one of my favourite plants. Two new heathers add winter colour to the driveway area: deep pink Erica "Winterfreud" (Nov-Apr) and beautiful mauve-pink Erica "Pink Spangles" (Jan-May).

Euphorbia "Wulfenii" looks amazing in the ground and in a tub. "Wulfenii" seeds itself, so I look for seedlings and pot them up as replacements for the originals because they can quickly become large and straggly, as at Highdown Gardens. My seedling in the front garden has grown from 6"x6" to 1½'x2' since being newly planted in September 2017. It now has seven flower heads and will continue flowering until June with huge sulphur-yellow cylindrical flower heads.

Lonicera "Fragrantissima" (shrub honeysuckle) is flowering away as it does every year from December to March and it seems so content growing in a tub. After a few years I decided it needed re-potting but when it came out of its pot the root ball was fine, not overgrown at all. It is a very robust and rewarding plant with small, scented creamy-white winter flowers.

---

## Speeding in Findon

In response, and support, of the letter from Clive Ball printed in last months Findon news I would like to draw readers attention to the problem faced by residents, walkers, horse riders and cyclists in the portion of Nepcote Lane leading to Cissbury Ring. As many will know there is a National Speed Limit applies sign positioned at the entrance to this lane and many motorists appear to take this as a challenge to achieve the top speed of 60mph with complete disregard to whom ever else is using the road and

their safety. As a resident of the lane myself I have witnessed many near misses and fear an impending accident to be inevitable.

Having in the past been dismissed by the Local Authority, when my request to have a 30mph in this area reviewed, I wonder if any fellow readers could provide a solution to this problem and help to provide a safer environment for the many residents and visitors who enjoy the beautiful environment in which we live.

Jane Proudlock

# THE MELLOR PRACTICE

INDEPENDENT FINANCIAL ADVISERS

**Is your answer 'YES' to any of these questions?  
Then we can help you!**

- Confused by the array of pensions options?
  - Need to invest an inheritance or pension lump sum?
- Worried about long term care funding?
- Fed up with your cash ISA return?
- Ethical investment a concern?

We are a team of fully qualified advisers, who can provide you with independent financial advice. Established locally since 1984, we pride ourselves on our friendly, professional service.

**NOW OPEN AT**  
31 Chapel Road | Worthing | West Sussex | BN11 1EG

Call us on **01903 882007**

Visit our website **[www.themellorpractice.co.uk](http://www.themellorpractice.co.uk)**

Drop in to **our Worthing office**

Or call and make an appointment to see us at **our Arundel office**

**Your first 45 minute consultation is at our expense**

The Mellor Practice Ltd is an appointed representative of Lighthouse Advisory Services Limited, which is authorised and regulated by the Financial Conduct Authority.

The Mellor Practice Ltd, Registered in England, No. 10567558

Registered Office: 41b Beach Road, Littlehampton, West Sussex, BN17 5JA

The value of your investments can go down as well as up, so you could get less back than you invested.

# Findon Planning Applications

Planning applications for Findon are under the authority of South Downs National Park and listed on the SDNPA website ([www.southdowns.gov.uk](http://www.southdowns.gov.uk)).

Findon Parish Council (FPC) Planning Committee meetings are scheduled monthly to consult on planning applications received from the South Downs National Park Authority (SDNPA). Parish Consultation Letters (PCL) received from the SDNPA are displayed on the Notice Boards outside the newsagents and the Village Hall, and published on the FPC website (<http://findon.arun.gov.uk>) along with the schedule of Committee meeting dates. Please note that due to Findon News publication deadlines, some applications may have already been placed before the Committee. Residents should

check the Notice Boards and FPC website regularly to view notices and meeting details.

Any enquiries should be address to the FPC Clerk - 01903 877225.

Since the last issue of Findon News, the following Planning Applications have been posted on the SDNPA website:

## **One bedroom single storey timber framed building with larch cladding and momopitch roof.**

Lyndene Findon Road Findon BN14 0RA  
Ref. No: SDNP/19/00467/PRE

## **Extension of existing detached garage.**

3 Braeside Close Findon BN14 0GF  
Ref. No: SDNP/19/00317/PRE

---

## Worship and Praise service

The Worship and Praise services are going really well with good congregations - the March Service will be the sixth month since we started.

### **Worship and Praise service - Sunday 3rd March - 10 am at Findon Church**

St John the Baptist School Choir will lead the singing this month.

Coffee and soft drinks after the service. Everybody very welcome.

Please come and support the young people.

Graham Langford

---

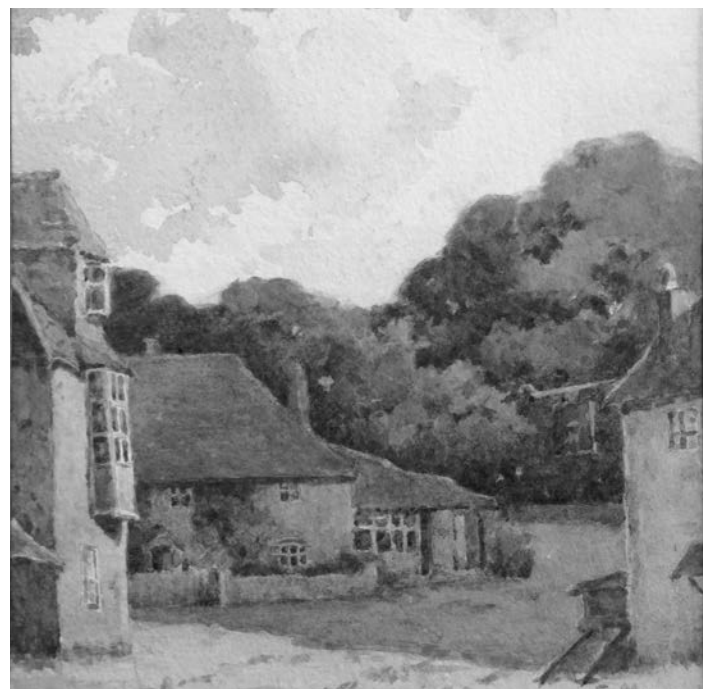
## Mystery Painting

The Findon Village website recently received an interesting enquiry from a lady in Lincolnshire.

Having purchased a watercolour painting (shown right) from a local Antique Centre the lady found an inscription inside the mount regarding Findon. The artist's name is written in capital letters - "E Marrack".

Has anyone heard of the artist or has any information regarding this painting?

If you do then please email [findonwebsite@gmail.com](mailto:findonwebsite@gmail.com) or post your handwritten reply into the "Findon News" box in the Village Store.



Village House Hotel  
The Square  
Findon Village  
BN14 0TE

# Village House

Tuesday Nights: **Pizza & a Pint**

Just £10

~~~~~

Wednesday Nights: **Thai**

2 Courses £16-95

Great Food ~ Great Beer ~ Great Place to be.....anytime

Mid Week: 2 Course Lunch £12.95  
Kids meal deal £7.95

~~~~~

Great Roasts Every Sunday

Saturday 23<sup>rd</sup> March - Seafood Menu

(see facing page) NB. This is the only food served that evening

~~~~~

Book Now for Mother's Day - 31<sup>st</sup> March

01903 873350

facebook @Findonvillagehouse

www.villagehousefindon.co.uk



# VILLAGE HOUSE SEAFOOD NIGHT

## SATURDAY 23<sup>RD</sup> MARCH

### *Starters*

*Seared scallops on celeriac, beetroot and pea & mint purees (gf)*

*Or*

*Trio of selsey crab*

*(Crab bisque, Thai crab cakes, potted crab with sourdough bread)*

-

### *Mains*

*South coast Lobster Caesar salad (gf available)*

*Or*

*Roasted market fish on a mussel, cockle and shellfish casserole (gf)*

*Or*

*Really posh fish pie*

*(With monkfish, king prawns, family smoked haddock in a creamy herb,  
Pernod bechamel topped with gruyère mash)*

*Or*

*Argentinian rib eye steak, bearnaise, watercress, chips (gf)*

-

### *Puds*

*Our homemade jam Roly poly with custard*

*Or*

*Lemon posset with orange shortbread*

*Or*

*Sussex cheeses with quince jelly*

*£30 per person*

# *Sewsilver*

28 Guildbourne Centre, Worthing  
(opposite Wilkinsons)

## **Beautiful, Affordable Jewellery & Gifts**

- Stunning sterling silver jewellery
- Contemporary titanium, steel & leather jewellery
- Unusual and unique gifts & greetings cards for all occasions

**Tel: 01903 218994   [www.sewsilver.com](http://www.sewsilver.com)**

## **KJ ROBERTS**

### **Property Maintenance and Electrical services**

Friendly locally based tradesman.  
Interior/exterior decorating, tiling,  
flooring, bathrooms, kitchens,  
decking, patios, fencing  
and any odd jobs.

All Electrical work undertaken.  
No job too small, Free estimates.

**Tel Findon 873913**

**mobile 07947233424**

**Email [jankevrob@aol.com](mailto:jankevrob@aol.com)**

## **UNABLE TO TEND A LOVED ONE'S GRAVE**

A service Tailored to your  
Requirements and pockets,  
we can do it for you.

Findon / Worthing area

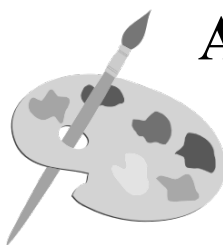
For a leaflet, more information  
or to arrange an appointment

Please call G. C. F. Services

**Tel : 01903 873813 or 07785230913**

email : [gcfgraves@aol.com](mailto:gcfgraves@aol.com)

website : [www.gcfservices.com](http://www.gcfservices.com)



## **Art Classes For All**

Providing a bespoke service  
for all abilities.

- Practice drawing skills
- Explore different Media

Small social workshops in a home studio

Above all lots of fun, coffee and cakes!

**Please contact Anthea:**

**[antheablackmore1@gmail.com](mailto:antheablackmore1@gmail.com)**

**01903 882226 / 07817 565472**

# *Pure*

Locally produced chocolate truffles  
without any colourings, additives or  
preservatives.

Free delivery to  
Findon village

## **Chocolate Truffles**



**[www.purechocolatetruffles.co.uk](http://www.purechocolatetruffles.co.uk) or contact Kim on 01903 873829**

## Findon Downs WI

Our 12th February meeting was our first this year in the Village Hall. Various circumstances prevented some members attending, but 15 members were fortunate to be entertained by one of our own WI Presidents who gave us the opportunity to sit back and watch "The island of Forty Thieves - Bermuda", Bermuda is made up of a group of 150 islands in the middle of the Atlantic. The main island is 20 miles long but only half a mile wide but is densely populated and is protected by a coral reef. Due to the number of shipwrecks the Island was called "Devil's Island."

Lesley Boardman was thanked for her very interesting talk and we able to see many of the interesting areas of Bermuda with the help of her projector and colour slides.

Our Annual Jumble Sale took place in February and many bargains were to be

had. We opened the Cafe and thanks to Maggie Martin, we were supplied with gorgeous cupcakes and sausage rolls. Thanks also to John Martin who helped enormously by setting up and removing our tables for the Sale and for standing patiently at the door collecting the entrance fee. Our thanks to Mike Solomons who, once again, came to our rescue by looking after the Brick a Brack table and to all the volunteers who helped us. Items left were then collected by a representative from the Fund Raising Department of St. Barnabas.

Our next meeting will be held in Findon Village Hall on Tuesday, 12th March - 2.30pm to 4.30pm

Speaker: Dr. Alan Cornfield  
"Can Facebook, Twitter & YouTube Improve your lifestyle - help WIs and be fun"

Exhibition: a pressed flower.

Jill Schiller

---

## Findon Village WI

Our February meeting fell on Valentine's day so we had some lovely heart-shaped items in our competition. Sassy and Lesley baked delicious cakes and we were delighted to welcome six visitors

Pia Offord gave us a very informative talk on The Dogs Trust (formally known as The National Canine Defence League), which is the UK's largest dog welfare charity. It cares for over 15,000 dogs each year through a network of 20 rehoming centres in the UK. Pia reassured us that they never put down a healthy dog. Pia has sent us a lovely email thanking us for the donations in their collection box, and dog beds and towels donated by our members.

Our next meeting, 14th March - our

birthday meeting - and we are looking forward to a musical extravaganza presented by Ann Chance OBE

The competition is Theatre or Showtime Memorabilia

The next coffee morning at Julia's Kitchen is Tuesday 19th March from 10.30 – all welcome.

Visit our website –  
[www.findonvillagewi.wixsite.com/mysite](http://www.findonvillagewi.wixsite.com/mysite)  
or find us on Facebook - Findon Village WI  
for the latest information of our various groups, or email  
[findonvillagewi@hotmail.co.uk](mailto:findonvillagewi@hotmail.co.uk)

All visitors welcome – we look forward to seeing you

Paddy Winter  
Findon Village WI President

---

### 200 Club

Bob Eastabrook

February's winner of the £25 prize was number 41 – J Woodford

**your  
community  
vet**

Expertly caring for dogs, cats and other domestic pets in West Sussex for over 35 years!



-  Puppy & Kitten Clinics
-  Microchipping & Pet Passports
-  Orthopaedic, Spinal, Soft-tissue & Reconstructive Surgery
-  Laparoscopic (key-hole) Surgery & Advanced Laser Therapy



### **NEW Extended Vet Consulting Hours**

We've increased our weekday consulting hours, ensuring our clients have greater access to the vets at the most convenient times.



### **Introducing Pet Health Plans**

**Simple, affordable & money-saving**  
A proactive, preventive approach to your pet's healthcare. Please visit our website for more info.

**43 School Hill  
Storrington**  
01903 743040

**179 Findon Road  
Findon Valley, Worthing**  
01903 877325

**2 High Street  
Steyning**  
01903 816428

[www.crosswaysvets.co.uk](http://www.crosswaysvets.co.uk)

## **For all your home water needs, speak to the professionals - UKh<sup>2</sup>o**

### **Water softeners**

installation, servicing and salt

### **Filtered drinking water systems**

and boiling water taps

### **Kitchen and bathroom design**

plus installation

### **Heating and plumbing services**



**UKh<sup>2</sup>o**

**01903 500 551 | [www.ukh2o.com](http://www.ukh2o.com)**  
50 Ferring St, Ferring, West Sussex BN12 5JP

 **Kinetico**  
home water systems

## **Paws Animal Sanctuary**

Every week we have telephone calls from cat owners who have lost their cats. I always ask if their cat is microchipped and spayed. So often they tell me they didn't have either because their cat never goes out! Often she is one of last years kittens My heart sinks once again, owners do not realize they can get pregnant at 5 or six months! So we take in a stray cat, not microchipped, and after a few weeks we notice she is getting fat. We then have the expense of having all the kittens inoculated and the mum spayed. Of course it means weeks more work for the Volunteers, but no one minds when the kittens arrive - kittens are a delight.

We have two litters at the moment and they are all so gorgeous, everyone wants to choose names for them.

We have regular requests from rabbit owners wanting us to take in their rabbits. When we ask how many (thinking it will be one or two) they often tell us they have had so many babies they cannot cope with them all!

We have more Guinea-pigs than Rabbits. Luckily, they find homes almost immediately and seem to be the most

popular pets with children.

We have had quite a few Hamsters in recently, they often bite us when we are feeding them, which puts the children off. We have still not found a home for Darwin the grey Degu. We also have a pair of very pretty young Budgies in a nice cage needing a home.

One of our Volunteers has given us lots of baby Aloe Vera plants in pots. It is sensible to always have one of these plants on your kitchen window sill in case of burns, as it takes away the pain and stops scarring. We are selling the plants at 50p each. Every little helps.

Stacey

Paws Animal Sanctuary Findon  
15 The Oval, Findon Village  
West Sussex. BN14 0TN  
01903 872 734 / 0790 447 6819

We never use an ansaphone so keep trying someone is always around.  
7 days a week.

Open to Visitors 12-4pm Sundays.  
email: [pawsanimals@hotmail.co.uk](mailto:pawsanimals@hotmail.co.uk)  
[www.pawsanimalsanctuaryfindon.co.uk](http://www.pawsanimalsanctuaryfindon.co.uk)  
Registered Charity 1096231

---

## **From the Belfry**

On behalf of the Bellringers it is with pleasure and delight that I am able to tell the Village that the total of our fund raise for the maintenance of the bells is £3,500. Thank you so much to everyone who contributed in any way.

The two functions in the Church, October 6th and November 3rd, raised almost £900 and the Smartie tube returns gave nearly £800, what a fantastic fund raise, I understand there are a few more Smartie tubes to be returned.

In addition we were also given several generous donations to add to the pot and grants have been acquired from various Church and Bellringing organisations. So all in all more than two thirds of the cost

(£12,600) for the maintenance has been achieved.

We do not have a definite date for the commencement of the work, hopefully in March, but in addition to work being carried out in the tower two of the bells installed in the Church in the 1500s will be lowered from the tower and taken to the workshops to be fitted with new modern headstocks. It is anticipated that the bells will be out of action for about a month, but that short time will assure the Parish that the bells will be turning in good order for generations to come.

Once again, many thanks to everyone.

Barbara Harbut  
Tower Captain

## Dog friendly Holiday Home in Findon

The Haven @ Findon is a modern 2 bedroom bungalow in Findon village that sleeps up to 4 people and is ideally situated for family and friends (and their dogs) visiting relatives, attending weddings, parties or just wanting a weekend break or holiday.

It is available on a self-catering basis from a minimum 3 night stay.

We are rated 'Excellent' on Trip Advisor and AirBNB.

**You can visit our website -[www.thehavenfindon.uk](http://www.thehavenfindon.uk) or for more details or enquiries phone Steve on 07590533892**

### CLIP CLOPS

Holiday Accommodation

In Findon Village

*Lovely spacious self catering accommodation - sleeps two*

Twin bedroom, Sitting room, Shower bathroom, lovely spacious sun lounge, Kitchen and garden.

Dogs welcome. Easy walk to local pub & shops or onto the downs.

Minimum stay 3 nights.

**Contact: Karen 07886650747  
[karmitage58@gmail.com](mailto:karmitage58@gmail.com)**

### HOLIDAY ACCOMMODATION

**"Little Longmead" Findon Village**

**Sleeps 4 - Self Catering**

1 Double King Size, 1 Twin room, Bathroom

Kitchen, Lounge Dinning, Lovely Views

Own Enclosed Garden & Patio with

Garden Furniture and Barbecue

*One Well Behaved Dog Welcome*

**Minimum Stay 2 Nights**

**Contact Ann: Tel - 07802507976**

**Email - [pamamm@talk21.com](mailto:pamamm@talk21.com)**

## DOMESTIC HEATING & ELECTRICAL SERVICES LTD

*Heating, Plumbing & Electrical*

*Est 1968*



- Boiler Installations
- Electric Boiler Installations
- Boiler Servicing & Repairs
- Gas & LPG (all appliances)
- Power Flushing
- Hot Water Cylinders
- Gas Fires & Wood Burners
- Bathroom Installations
- Radiator Installations
- All Plumbing Works



**01903 442108**

**1-2 The Forge, Findon Village, West Sussex, BN14 0SE  
[www.domesticheatingservices.co.uk](http://www.domesticheatingservices.co.uk)**



## Mustard Seed - Love in a Box

Mustard Seed have sent their thanks for the Love in a Box shoeboxes we sent for last Christmas from the Parish, together with their 2019 Newsletter. Copies have been sent to the three Churches for display.

In Mustard Seed's Newsletter there are photos of children receiving their box. For those who missed the report in the

December/January magazine, we collected a magnificent total of 115 boxes.

We will be collecting boxes again this year in the autumn so why not start collecting items for a box now.

If you'd like more information, or would like to receive email copies of the newsletter and Certificate of Appreciation, please ring **Hilary on 872324.**

Hilary Langford

Save the Date

### Fund raising Concert

**For the Village Hall, By the Village**

Friday June 7th 7-30pm

In Findon Church

We already have several Musicians and Singers from the village willing to take part.

If you have a musical talent and would like to know more about the concert, please contact

**Graham 07753 755889**

### Pointless Evening!

Findon Friends invite you to a Pointless Evening:

Friday April 12th,  
7pm for 7.30pm start  
at Findon Village Hall

More information next month  
or from Ian Hollyhomes

01903 8721475

or Gerald Hibbs

01903 872563

## THE MALAYSIAN TEA COMPANY

FINDON BASED & SELLING SINGLE  
ESTATE PREMIUM QUALITY TEAS



**Tea Bags:** These double-chamber black-tea bags use the finest Orange Pekoe tea leaves

Also available as Earl Grey and in other Fruit flavours.

**Loose Leaf Black Tea:** Available in both  
Orange Pekoe & BOPF (Broken O P Fannings)



**GROWN IN THE CAMERON HIGHLANDS SINCE 1933**  
**AVAILABLE NOW AT FINDON POST OFFICE**

**CAMERON VALLEY MALAYSIAN TEAS**  
**ONE KUALA LUMPUR OR TWO?**

### FOX LEA £808,000



An impressive and most appealing five bedroom Detached Residence in sought after location.

### CONVENT GARDENS £519,950



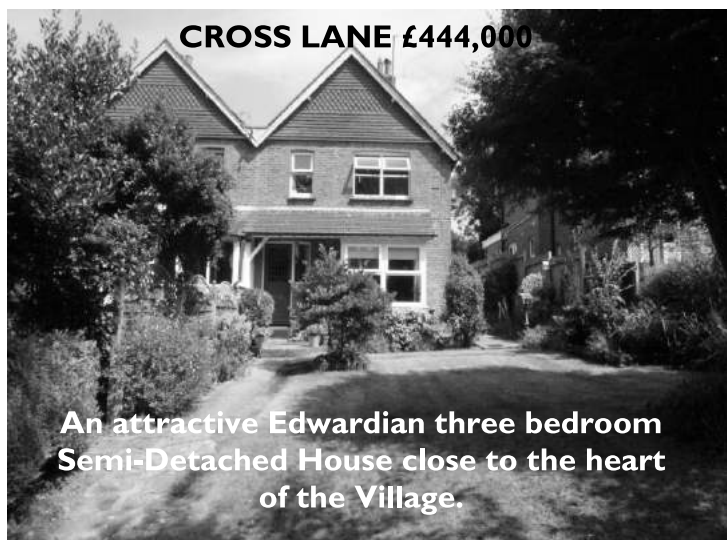
A substantial, well appointed three bedroom House constructed in 2000.

### NEPCOTE LANE £499,950



A most appealing extended two bedroom Detached Bungalow with feature rear garden, located a stone's throw from Nepcote Green.

### CROSS LANE £444,000



An attractive Edwardian three bedroom Semi-Detached House close to the heart of the Village.

### DOWNSIDE AVENUE £345,000



A well presented spacious two bedroom Semi-Detached Chalet Bungalow with delightful rear garden.

### HIGH STREET £329,950



A most appealing and delightfully located cottage-style two bedroom Semi-Detached Bungalow.



## CARPET FITTING

We Will Fit  
Your Own Carpets

Re-stretching - Repairs - Cleaning  
Supply underlay - Hardboard - Screeding

*We supply all makes of carpets and vinyls*

Call Les Sheeran on:

**Tel: 01903 770477**

**Mob: 07966 212 358**

**[www.carpetsandvinylsdirect.co.uk](http://www.carpetsandvinylsdirect.co.uk)**

Over  
30 yrs  
trading

## F Silverthorne Fishmongers

Quality Fish Est. 1907

145 Montague St, Worthing

**Deliveries to Findon**

(Thursday & Friday Mornings)

**Tel. 01903 200854**

Call by 9:30am on the day,  
or the day before your delivery



## MONARCHS WAY Wellbeing Clinic

36 Cross Lane, Findon Village

**Sports & Therapeutic Massage therapies for  
general aches and pains, arthritis, sports,  
recreational and occupational injuries, stress and  
stress related conditions and general wellbeing.**

**By appointment only – please call 07841 636727**

**[www.monarchswayclinic.co.uk](http://www.monarchswayclinic.co.uk)**

### **AcTechUK.com**

#### **Making Technology Work For You**

Help with all aspects of technology for  
your home, mobile and business.

PC/Laptop fix, Network setup,  
telephone, audio visual services  
£30 call out with first fix and advice  
No fix, no fee. Findon Valley based.

25 years experience.

Customer Service Like it Used To Be!

Please call Andy:

**01903 930850 or 07515 948096**

**Email: [info@actechuk.com](mailto:info@actechuk.com)**

### **Peckhams Butchers**

*Locally produced meat,  
cut to your requirements.*

Daily deliveries of  
fresh fruit & vegetables.

We also provide a Friday  
morning delivery service  
for customers who find it  
difficult to get to the shop

**The Square, Findon**

**Tel: 01903 873202**



Create a new friend in the area for the elderly

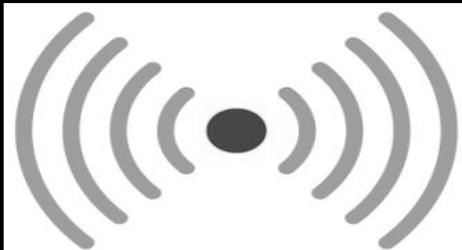
**One-To-One basis with Gail,  
No need to be alone anymore**

Home Visits | Drive by, Pop in visits  
Days Out | Afternoon Teas | Companionship  
Shopping | Administrative Help | General Chores  
and much more...

Rates from  
£12 per hour  
No client  
travelling fees

Full Home Helpers Insurance | Findon Based

Please call to find out more **07767 277 373**  
or email: Gailspals@gmail.com



**SMOKE ALARMS**

**SAVE  
LIVES**

**Bob Hendy  
Electrician**

Installation / Re-Wiring  
Security Lighting  
Fault Finding

**24 Hour service  
No Call Out Fee**

**01903 877204  
07850771246**

**Clapham & Patching Service Rota March 2019**

| <b>Date</b>                       | <b>Service</b>                            | <b>Priest</b>              | <b>Laymoc</b>      | <b>Readings</b>                                  | <b>Readers /<br/>intercessors</b> |
|-----------------------------------|-------------------------------------------|----------------------------|--------------------|--------------------------------------------------|-----------------------------------|
| 3rd March<br>Transfiguration      | Clapham SE<br>10.00                       |                            | John<br>Hammond    | Exodus 34: 29-33<br>Luke 9: 28-36, 43a           | Ann Harper<br>John Hammond        |
| Wed 6th March<br>Ash Wed          | Patching E<br>8.00                        |                            |                    | Isaiah 58:1-12 Ps<br>31{1-18 Matt6:1-<br>6,16-21 |                                   |
| 10th March<br>Lent 1              | Patching E<br>8.00                        | Helena<br>Buque            | Pauline Prior      | Deut 26:1-11<br>Luke 4:1013                      | Dorothy Barber                    |
| 17th March<br>Lent 2              | Patching SE<br>10.00                      | Helena<br>Buque            | Kath<br>Hutchinson | Gen 15:1-12,17-18<br>Luke 13:31-end              | Pauline Prior<br>John Haskey      |
| 24th March<br>Lent 3              | Clapham E<br>8.00<br>Patching FS<br>10.00 | Colin Cox<br><br>Colin Cox |                    | Isaiah 55:1-0 Luke<br>13:1-9                     | Dorothy Barber                    |
| 31st March<br>Mothering<br>Sunday | Clapham PE<br>10.00                       | Helena<br>Buque            | Kath<br>Hutchinson | Exodus 2:1-10 Luke<br>2:33-35                    | Mary Best<br>tba                  |

## Findon, Clapham & Patching Churches - March

*Walking together in the Way of Christ and sharing His love with others*

|                                                          |         |                                                              |
|----------------------------------------------------------|---------|--------------------------------------------------------------|
| <b>Sunday 3<sup>rd</sup> March</b>                       | 8.00am  | Eucharist, Findon Church                                     |
|                                                          | 10.00am | Worship and Praise Service at Findon                         |
|                                                          | 10.00am | Sung Eucharist at Clapham Church                             |
| <b>Ash Wednesday<br/>6<sup>th</sup> March</b>            | 11.00am | Eucharist & Ashing at Clapham Church                         |
|                                                          | 7.00pm  | Eucharist & Ashing at Findon Church                          |
| <b>Sunday 10<sup>th</sup> March</b>                      | 8.00am  | Eucharist, Patching Church                                   |
|                                                          | 9.30am  | Sung Eucharist, Findon Church                                |
| <b>Sunday 17<sup>th</sup> March</b>                      | 08.00am | Eucharist, Findon Church                                     |
|                                                          | 09.30am | Family Communion Findon Church                               |
|                                                          | 10.00am | Sung Eucharist Patching Church                               |
| <b>Sunday 24<sup>th</sup> March</b>                      | 08.00am | Eucharist at Clapham Church                                  |
|                                                          | 09.30am | Sung Eucharist at Findon Church                              |
|                                                          | 10.00am | Family Service at Patching Church                            |
| <b>Sunday 31<sup>st</sup> March<br/>Mothering Sunday</b> | 10.00am | 5 <sup>th</sup> Sunday Parish Eucharist at<br>Clapham Church |

**Baptisms:** Georgina Goodwin.

**Funerals:** Tony Crowther.

**Afternoon Plus** – 3<sup>rd</sup> Thursday of the month at 2.30pm. Different events every month, details on the pew sheets or contact the rectory office.

**Light Lunch @ 1pm** last Tues of the month, at Findon Village Hall. £5. Everyone welcome

**Curry Nights** The next Findon Tajdar Curry Nights are last Thursday of the month, 28<sup>th</sup> February March (Men) at 7.30pm. **This month only**, Ladies meet at 7pm on Thursday 7<sup>th</sup> March (back to 1<sup>st</sup> Monday in April).

**Youth club** Every Thursday, with different themes every week (during school term time only). Ages 12+, 5pm till 6.30pm at The Rectory, Findon.

**Messy Church** 1<sup>st</sup> Tuesday of the month (5<sup>th</sup> March). TERM TIME ONLY. Starting at 3.30pm-5.45pm at Findon Village Hall. All children and their grown-ups welcome.

**Quiet Time in Findon Church.** 2<sup>nd</sup> Monday of the month. 11<sup>th</sup> March 6pm.

Rev. Helena Buqué, Priest in Charge and Rev. Colin Cox, Curate: c/o The Rectory, School Hill, Findon BN14 0TR.  
Tel: 873601, [findon.rectory@btinternet.com](mailto:findon.rectory@btinternet.com)

## **JULIE JORDAN**

**Professional Curtain Maker  
and Interior Design**

Phone for free estimates  
01903 263823 / 07801687155  
Juliejordan100@yahoo.co.uk

## **RELIABLE WINDOWS**

Friendly, Local, Well Established  
**WINDOW CLEANER**

Contact Chris for a quote  
**07780 687522**

**chriswitten10@gmail.com**

Window cleaning service offered  
Monthly, Bi-monthly or Quarterly  
Soffits, Fascias, Guttering,  
Conservatory Roofs

**\*\* No Job Too Big or Small \*\***

Water Fed Pole System or  
Traditional Window Cleaning

## **Findon Accountancy**

Chartered Certified Accountants

Findon based, reasonable rates

Full range of business & personal accounting  
and taxation services available

Ken Elliott FCCA, FCIS

Telephone 01903 872589

Email: [kenelliott@findonaccountancy.co.uk](mailto:kenelliott@findonaccountancy.co.uk)

Web: [www.findonaccountancy.co.uk](http://www.findonaccountancy.co.uk)

## **S Baker Carpets**

**Sussex Based Company Specialising in:**

Carpets, Vinyl, Karndean, Amtico,  
Laminate & Wood flooring

*Check out our work in the  
Findon Village Post Office*

**Call Steve on 07966 573474**

to book your free home consultation

[Stephen.g.baker@sbaker-carpets.co.uk](mailto:Stephen.g.baker@sbaker-carpets.co.uk)

**OVER 25 YEARS OF DEALING  
IN TOP QUALITY ANTIQUES &  
INTERIOR DESIGNER FURNITURE  
AND OBJECT D'ART.**

Our Services: Free Valuations  
Insurance Valuations  
Silver & Gold Polishing  
Furniture Restorations  
Buy and Sell - New items weekly  
Silver and Gold Bought

**2THE SQ**  
By Adam Collard Antiques & Interiors

**2 THE SQUARE  
FINDON VILLAGE BN14 0TE**

**01903 872205 / 07740 947847**

[www.2thesq.co.uk](http://www.2thesq.co.uk) / [adamcollard71@yahoo.co.uk](mailto:adamcollard71@yahoo.co.uk)



# Village Hall - March

For all booking enquiries please  
Email [findonhallbooking@gmail.com](mailto:findonhallbooking@gmail.com)

| <b>Weekly</b>                  | <b>Day</b>                                             | <b>Time</b>         |
|--------------------------------|--------------------------------------------------------|---------------------|
| Carpet Bowls                   | Monday                                                 | 14:30               |
| Lambstails (Term Time)         | Thursday                                               | 10:00 – 12:00       |
| Line Dancing                   | Wednesdays                                             | 09:45               |
| Danceaholics                   | Sunday                                                 | 19:30               |
| Just Yoga                      | Monday                                                 | 10:30               |
| Tai Chi                        | Friday                                                 | 10:00 – 13:00       |
| You Yoga                       | Tuesday                                                | 18:45               |
| Reduce Stress & Stiffness Yoga | Wednesday                                              | 19:30               |
|                                |                                                        |                     |
| <b>Fortnightly</b>             | <b>Date</b>                                            | <b>Time</b>         |
| Circle Dancing                 | 11 <sup>th</sup> , 25 <sup>th</sup>                    | 19:10               |
|                                |                                                        |                     |
| <b>Monthly</b>                 | <b>Date</b>                                            | <b>Time</b>         |
| Bead Magicians                 | 19 <sup>th</sup>                                       | 09:00               |
| Downs WI                       | 12 <sup>th</sup> , 23 <sup>rd</sup> , 28 <sup>th</sup> | 14:30, 10:00. 14:30 |
| Gardens Association            | 29 <sup>th</sup>                                       | 18:30               |
| Messy Church                   | 5 <sup>th</sup>                                        | 13:45               |
| Village WI                     | 14 <sup>th</sup>                                       | 18:45               |
| Meditation                     | 18 <sup>th</sup>                                       | 19:30               |
| Tastevin                       | 7 <sup>th</sup>                                        | 19:00               |
| Light Lunch                    | 26 <sup>th</sup>                                       | 12:00               |
| 200 Club                       | n/a                                                    | 18:00               |
|                                |                                                        |                     |
| <b>Committee Room</b>          |                                                        |                     |
| N/A                            |                                                        |                     |
|                                |                                                        |                     |
| <b>Other Events</b>            | <b>Date</b>                                            | <b>Time</b>         |
| Art Class                      | 16 <sup>th</sup>                                       | 09:00               |
| Film Night                     | 15 <sup>th</sup>                                       | 18:30               |
| FVHT Greek Quiz Night          | 30 <sup>th</sup>                                       | 19:00               |
| Village Defibrillator Training | 29 <sup>th</sup>                                       | 18:30               |
| Cissbury Group WI              | 21 <sup>st</sup>                                       | 13:30               |

*Bookings subject to change in relation to building work*

## The Village Hall website

provides contact and booking details as well as listings of forthcoming events  
[www.findonvillagehall.com](http://www.findonvillagehall.com)

Buying ■ Selling ■ Letting ■ Commercial ■ New Homes

Michael  
**Jones**  
& Company

# Have you seen the signs?



## **There are unmissable signs that now is a great time to sell your property.**

Many people are searching for a home to buy or let  
in your area.

Whether you're looking for a quick sale, or are simply  
curious to find out how much your property is worth,  
contact us today for a free, no obligation valuation.

### **Michael Jones Findon**

208 Findon Road  
Findon Valley  
Worthing  
BN14 0EJ

**T: 01903 872949**

**[www.michaeljones.co.uk](http://www.michaeljones.co.uk)**



**Offices in** Worthing, Lancing, Goring, Findon, Broadwater and Rustington