



Findon

April
2019

Community newsletter for
Findon, West Sussex
Including the Church Parish of
Findon, Clapham & Patching

Editorial team led by
Nick Gore

News

*Findon News is published monthly and is available free of charge from various outlets throughout Findon and can be viewed on the Findon Community website - www.findonvillage.org
Findon News does not endorse any advertisements published. No responsibility will be taken for errors, omissions or any claims made by contributors. Opinions expressed are not those of the publisher.*

Articles for publication (**maximum 650 words**) can be submitted by email to findonnews@zoho.com, or via the 'Findon News Box' in the Village Shop.

Closing Date for Next Publication : 20th April

Reporting Anti-Social Driving - Operation Crackdown

Speeding traffic through the village has become a major issue. But your ability to report anti-social driving is now possible through Operation Crackdown - a joint initiative run by Sussex Police and the Safer Sussex Roads Partnership.

Operation Crackdown provides Sussex communities with an opportunity to report specific instances of anti-social driving and enables Sussex Police to develop intelligence regarding repeat offenders, vehicles, times and locations which can then be used to plan, target and deploy police resources.

If you have any specific information about anti-social driving, including speeding, in and around Findon Village please visit the Operation Crackdown website www.operationcrackdown.org to report this. Alternatively, you can call **01243 642222** during office hours to speak to an operator.

When you report an incident you will be asked to provide:

The vehicle registration number; make, model and colour of vehicle; Details about when and where the incident happened (if you use the website the online map will help you identify the area); Any information that may help to identify the driver.

Your personal contact details will be treated in confidence.

Leaving your email address will allow Operation Crackdown to make contact with you should the report need clarifying and you will receive details of other online services that Sussex Police provide.

View Findon News on the Findon Village website www.findonvillage.org

Buying ■ Selling ■ Letting ■ Commercial ■ New Homes

Michael
Jones
& Company

Have you seen the signs?



There are unmissable signs that now is a great time to sell your property.

Many people are searching for a home to buy or let in your area.

Whether you're looking for a quick sale, or are simply curious to find out how much your property is worth, contact us today for a free, no obligation valuation.

Michael Jones Findon
208 Findon Road
Findon Valley
Worthing
BN14 0EJ

T: 01903 872949

www.michaeljones.co.uk



Offices in Worthing, Lancing, Goring, Findon, Broadwater and Rustington

From the Rectory

Easter is very late this year, at 21st of April, it challenges the idea of a 'sunrise Service'! We'd need to get up very early to greet our Risen Lord as the light dawned this year! Rest assured, our worship will be as usual at 6am at Findon Church this year – no need to alter your alarm.

So, why does the date for Easter Sunday change from year to year, when we celebrate the birth of Christ on the same calendar date every year? According to the Bible, Jesus Christ's death and resurrection occurred around the time of the Jewish Passover Feast, which is celebrated on the first full moon after the equinox (March 21st) As we all know, the phases of the moon occur in a regular pattern, changing the date of the full moon from month to month, so Easter can fall on any day between March 22nd and April 25th!

The name for the Feast is less easy to explain. In the original language of the gospels, the Greek word, *pascha* is used (from the Aramaic Hebrew, *pesach*, which means Passover) and many languages (French, Italian, Spanish,) name what we know as Easter using this root (Google tells me the Scottish word is Pask!) Our word, **Easter**, derives from the name of a pagan goddess, Eostra, goddess of the growing light of day and Spring. Perhaps a link was made to the risen Jesus first being seen by Mary Magdalene after the women had gone to the tomb at first light and found it empty (see Matthew 28, Mark 16 or Luke 24, and John 20:11-18 particularly) Spring is in the northern hemisphere anyway, a time of new birth, new growth, and the resurrection of Christ brings us, as Christians, new hope; the promise of new

life, a new beginning. That is the reason the church keeps a time of reflection and penitence in the 40 days of Lent, preparing our hearts to welcome the Risen Lord into our hearts anew, confident in the promise of forgiveness that Jesus brings when we repent and amend our lives. Did you make a promise to give up something for Lent (or perhaps do something extra)? Sadly, my plan to cut out cake hasn't lasted!

If you ask a child what Easter is about, the first response is usually 'chocolate eggs'! When I was a child, our family custom was to paint a boiled egg on Easter morning before carefully turning it over to eat the contents, then turning it back again in the egg cup as an Easter decoration! Across the country, there are many egg-related traditions at Easter, such as rolling eggs down a particular hill. If you think about it, an egg is a great symbol for Easter; it contains new life, in the form of a baby bird (or, less cute, a baby crocodile!) waiting to hatch. It can also illustrate the tomb in which the body of Jesus was laid after his crucifixion. For children, as for many adults, the thought of a chocolate egg is more attractive than a savoury egg, and manufacturers were quick to seize the marketing opportunity! I wonder how many of you have bought a 'Real' Easter Egg for your child? Made by the Meaningful Chocolate Company, with Fairtrade chocolate and including a booklet of the Easter story, this is a great way of sharing the real meaning of Easter with your family!

Whatever your preference for eggs, I wish you a joyful Easter, and look forward to seeing you at one or more of our Services this year.

Every blessing, Helena

Rev. Helena Buqué, Priest in Charge and Colin Cox, Curate:
c/o The Rectory, School Hill, Findon, BN14 0TR. Tel: 873601
findon.rectory@btinternet.com www.findon-clapham-patching-churches.com
FB: Findon Clapham Patching Churches

JULIE JORDAN

**Professional Curtain Maker
and Interior Design**

Phone for free estimates
01903 263823 / 07801687155
Juliejordan100@yahoo.co.uk

RELIABLE WINDOWS

Friendly, Local, Well Established
WINDOW CLEANER

Contact Chris for a quote
07780 687522

chriswitten10@gmail.com

Window cleaning service offered
Monthly, Bi-monthly or Quarterly
Soffits, Fascias, Guttering,
Conservatory Roofs

**** No Job Too Big or Small ****
Water Fed Pole System or
Traditional Window Cleaning

Findon Accountancy

Chartered Certified Accountants
Findon based, reasonable rates
Full range of business & personal accounting
and taxation services available

Ken Elliott FCCA, FCIS

Telephone 01903 872589

Email: kenelliott@findonaccountancy.co.uk

Web: www.findonaccountancy.co.uk

S Baker Carpets

Sussex Based Company Specialising in:

Carpets, Vinyl, Karndean, Amtico,
Laminate & Wood flooring

*Check out our work in the
Findon Village Post Office*

Call Steve on 07966 573474

to book your free home consultation

Stephen.g.baker@sbaker-carpets.co.uk

**OVER 25 YEARS OF DEALING
IN TOP QUALITY ANTIQUES &
INTERIOR DESIGNER FURNITURE
AND OBJECT D'ART.**

Our Services: Free Valuations
Insurance Valuations
Silver & Gold Polishing
Furniture Restorations
Buy and Sell - New items weekly
Silver and Gold Bought

**2 THE SQUARE
FINDON VILLAGE BN14 0TE**

01903 872205 / 07740 947847

www.2thesq.co.uk / adamcollard71@yahoo.co.uk

2THE SQ
By Adam Collard Antiques & Interiors

Findon Village Store News

Now that the clocks have changed it is starting to feel like winter is behind us, it will be nice to close the shop at 7pm still under daylight conditions!

Easter is just a couple of weeks away. We have lots of chocolate treats, eggs and gifts. Our spring flower display is looking wonderful outside the shop. The shop is open every day over the Easter weekend, we will have daily newspapers as normal.

Our opening hours are as follows;
Good Friday: shop 07.00-19.00. Post office counter 08.30-17.30
Easter Saturday: shop 07.00-19.00. Post office counter 08.30-17.30
Easter Sunday: shop 07.00-12 noon. Post office counter 08.30-12 noon
Easter Monday: shop 07.00-14.00. Post office counter 08.30-14.00

For Easter weekend we will be holding an Easter hunt for children of all ages. The hunt will run from Good Friday until Easter Monday and will involve a short walk around the centre of the village with questions to answer en route. All returned quiz sheets will be rewarded with a sweet treat and will also be entered into the prize draw to win a larger prize (will be drawn on Tuesday April 23rd). Entry is free and forms can

be collected from the shop over the Easter weekend.

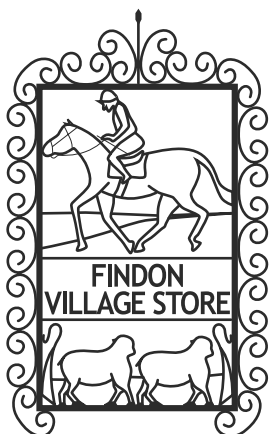
The committee hold regular get togethers with our volunteer team. This is a great opportunity for us to work out how the shop is doing things right and also how we feel we can improve what we do. Feedback from the volunteers has suggested that a questionnaire would be helpful, I will be leaving questionnaire sheets in the shop at the end of April, please give us your honest feedback-good or bad!

I was touched to recently read an endorsement from one of our shareholders in a recent online forum and feel it is worth sharing:

'The shop is a pleasure to go into. Many of the staff and volunteers are neighbours and often friends or acquaintances, and there is always something of interest for the inevitable impulse buy we love so much. Its character is of the people of Findon, not some corporate marketing exercise designed to maximise profit. Quality is always worth a few extra coppers.'

Finally we will be saying farewell to Issac Woods who is leaving the team to concentrate on his studies. He has been with us from the beginning. We wish him all the best in his future endeavours.

Jo O'Dell- committee member/volunteer.



Horsham Road
Findon
BN14 0TF

FINDON VILLAGE STORE

Post Office & Newsagency

Groceries; Bread; Cakes; Freshly made Sandwiches;
Beers, Wine & Spirits; Tobacco; Cards

Run by the Community for the Community

Shop Opening Hours:
Mon to Sat 07:00 - 19:00
Sunday 07:00 - 12:00

www.findonvillagestore.org

Post Office Opening Hours:
Mon to Sat 08:30 - 17:30
Sunday 08:30 - 12.00

findonvillageshop@gmail.com

FINDON ROAD £615,000



A beautifully refurbished Detached Character Residence with feature Self-Contained Annexe.

THE CHASE £495,000



A completely refurbished, beautifully presented two bedroom Detached Bungalow.

HOLMCROFT GARDENS £480,000



A delightfully presented, spacious three bedroom Detached Bungalow, situated close to the centre of the Village.

CROSS LANE £444,000



An attractive three bedroom Edwardian Semi-Detached House close to the heart of the Village.

THE CHASE £430,000



Spacious two bedroom Detached Bungalow with secluded rear garden.

SOUTHVIEW ROAD £389,950



Attractive three bedroom cottage-style House in the heart of the Village.

Does Neighbourhood Planning give you a chance to decide on where future housing goes in your village ?

An update on the Updated Findon Neighbourhood Plan (March 2019)

In 2016 the community in Findon voted in a local referendum to support its first Neighbourhood Plan. The right to decide where future housing should go in the village was not taken up, at that stage. As a consequence this responsibility passed to South Downs National Park, but under the assumption that the SDNPA would consult with the Parish Council and the community on preferred locations, before allocating sites for future housing in Findon of around 30 homes, in the emerging Local Plan.

In 2017, without any local consultation, the SDNP included two housing allocation sites in the Pre Submission version of the Local Plan. The two locations, downland paddocks east of Elm Rise and Soldiers Field House and grounds are highly sensitive to the local downland landscape and local historic environment which characterise Findon and its landscape setting.

A core 'objective' and the supporting 'policies' in the 2016 Neighbourhood Plan are to conserve and enhance the local downland landscape character and setting of Findon and its historic environment while seeking to find sustainable development opportunities in less sensitive locations to deliver the future housing provision for Findon. **The two housing allocation sites for Findon in the Local Plan**, which following the recent formal Inspection stage is due to be formally adopted by the SDNPA in summer 2019, are **in conflict with** the core objective and supporting policies in **the 2016 Findon Neighbourhood Plan...**

...and therein lies the challenge for neighbourhood planning with the SDNPA

maintaining its allocation of the downland paddocks site at Elm Rise and the Soldiers Field House and landscaped grounds site, in the Local Plan. This is despite the clearly expressed view of the village to the contrary, through the preparation of an Updated Neighbourhood Plan which proposes alternative, less landscape and historic environment sensitive sites to meet the housing provision for Findon, as replacement housing site allocations ...

Just to be clear, the Localism Act and the Neighbourhood Planning Regulations allow Updated Neighbourhood Plans, which include housing site allocations, to be prepared, but leave it to local planning authorities, in our case the SDNPA, to decide whether alternative (replacement) housing site allocations will supersede allocations in a Local Plan. The SDNP planning directorate and committee members have now formally stated that they do not consider the housing site allocations in the Updated Neighbourhood Plan will replace the two allocations in the Local Plan. This means that if the UNP were to become formally 'made' later this summer, Findon village faces a risk that it could potentially end up with double the number of future homes.

The SDNPA, like FPC, do not want over provision of homes in Findon, however continuing to press for the allocation of the downland paddocks at Elm Rise and Soldiers Field House and landscape grounds runs the risk of double allocation. That risk would not be there if the SDNPA withdrew these two housing site allocations in the Local Plan. They can do this as the local planning authority, but have decided not to, under any outcomes that they can foresee, including any 'yes' result in a referendum on the Updated Neighbourhood Plan.

continued on page 9 ►

Sewsilver

28 Guildbourne Centre, Worthing
(opposite Wilkinsons)

Beautiful, Affordable Jewellery & Gifts

- Stunning sterling silver jewellery
- Contemporary titanium, steel & leather jewellery
- Unusual and unique gifts & greetings cards for all occasions

Tel: 01903 218994 www.sewsilver.com

KJ ROBERTS

Property Maintenance and Electrical services

Friendly locally based tradesman.
Interior/exterior decorating, tiling,
flooring, bathrooms, kitchens,
decking, patios, fencing
and any odd jobs.

All Electrical work undertaken.
No job too small, Free estimates.

Tel Findon 873913

mobile 07947233424

Email jankevrob@aol.com

UNABLE TO TEND A LOVED ONE'S GRAVE

A service Tailored to your
Requirements and pockets,
we can do it for you.

Findon / Worthing area

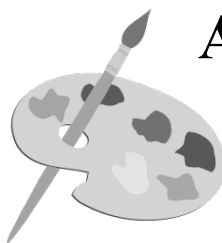
For a leaflet, more information
or to arrange an appointment

Please call G. C. F. Services

Tel : 01903 873813 or 07785230913

email : gcfgraves@aol.com

website : www.gcfservices.com



Art Classes For All

Providing a bespoke service
for all abilities.

- Practice drawing skills
- Explore different Media

Small social workshops in a home studio

Above all lots of fun, coffee and cakes!

Please contact Anthea:

antheablackmore1@gmail.com

01903 882226 / 07817 565472

Pure

Locally produced chocolate truffles
without any colourings, additives or
preservatives.

Free delivery to
Findon village

Chocolate Truffles



www.purechocolatetruffles.co.uk or contact Kim on 01903 873829

► *continued from page 7*

FPC and the UNP Working Group have consistently made representations to the SDNPA since the publication of the 2017 Pre Submission Local Plan, arguing that there are alternative, replacement housing site allocations that are much less local landscape and local historic environment sensitive than the Local Plan allocation sites; that have very much more local support, tested by the preference surveys, than the Local Plan allocation sites; and that could provide community benefits like restored allotments, landscaped parking and enhanced village connectivity.....
.....but to no real avail

Nevertheless it is important that local democracy still uses best endeavours to try and prevail over a distant, higher tier local planning authority (SDNPA) and local land owners, who together are promoting housing development on landscape sensitive sites that the local community, the Updated Neighbourhood Plan Working Group and the FPC strongly feel should be conserved and enhanced, especially when alternative less landscape sensitive locations are available, viable and deliverable.

FPC have therefore decided to proceed with the Reg 16 consultation and Examination of the Updated Neighbourhood Plan to establish firm and clear evidence of the community's, aspirations, objectives and rights under the Localism Act and the Neighbourhood Planning Regulations, **unless circumstances significantly change during this stage.**

The Reg 16 consultation will run from mid April until the end of May, subject to the SDNP accepting that the 'Basic Conditions' for an UNP are met. An independent Examiner will also be appointed during this period and the Examiners Report

is likely to be issued by the end of July 2019.

Following receipt of the Independent Examiner's report, FPC will consider seeking a legal opinion on whether the weight given to Updated Neighbourhood Plan housing site allocation policies will prevail over the two housing site allocation policies for Findon in the Local Plan and then consult with the community about whether to proceed to a referendum and request the SDNPA to formally 'make' the Updated Neighbourhood Plan.

Where policies in different 'Plans' are 'in conflict' the latest 'Plan' policies prevail. This is why the Updated Neighbourhood Plan, if it is to be formally 'made', has to be 'made' after the Local Plan is formally 'adopted' this summer. Seeking a legal opinion would be about whether the housing allocation policies in the Local Plan and the Updated Neighbourhood Plan would be held to be 'in conflict'.

Updated Neighbourhood Plan Working Group

Findon Film Nights
Friday 10th May
Bohemian Rhapsody
** Starring **
Rami Malek Lucy Boynton
Gwilym Lee
Tickets (on the door) £5
Doors open: 6.30pm
Findon Village Hall
Raffle ~ Café ~ Ice Creams

— THE —
MELLOR PRACTICE

INDEPENDENT FINANCIAL ADVISERS

**Is your answer 'YES' to any of these questions?
Then we can help you!**

- Confused by the array of pensions options?
 - Need to invest an inheritance or pension lump sum?
- Worried about long term care funding?
- Fed up with your cash ISA return?
- Ethical investment a concern?

— ● ● ● —
We are a team of fully qualified advisers, who can provide you with independent financial advice. Established locally since 1984, we pride ourselves on our friendly, professional service.

NOW OPEN AT
31 Chapel Road | Worthing | West Sussex | BN11 1EG

Call us on **01903 882007**

Visit our website **www.themellorpractice.co.uk**

Drop in to **our Worthing office**

Or call and make an appointment to see us at **our Arundel office**

Your first 45 minute consultation is at our expense

The Mellor Practice Ltd is an appointed representative of Lighthouse Advisory Services Limited, which is authorised and regulated by the Financial Conduct Authority.

The Mellor Practice Ltd, Registered in England, No. 10567558

Registered Office: 41b Beach Road, Littlehampton, West Sussex, BN17 5JA

The value of your investments can go down as well as up, so you could get less back than you invested.

'Call My Bluff' Wine Tasting

***An evening of wine 'Call My Bluff'
(wine tasting with a twist!)***

**Thursday 16th May at 7.00pm
Cissbury Barns, Nepcote**

**Tickets: £26-50 per person
includes a delicious two course supper**

Following the success of last years "Call My Bluff" Wine Tasting, here's another chance to enjoy a memorable evening putting your skills to the test with Hennings Wine and see if you can tell the truth from the bluffs..

**To obtain tickets please contact
Guild Care on 01903 528613
or email fundraising@guildcare.org**

There will also be a raffle during the event
(not included with the ticket price).
All proceeds to go to Guild Care

*A local charity (founded 1933) based in
Worthing, Guild Care supports some of our
areas most vulnerable residents; touching the
lives of over 3,000 people every year.*

Findon Friends of St. Barnabas

**'Fish and Chips
and Quiz Evening'**

Thursday 11th April
at the Village House,
Findon.

Tables of six people, tickets
£13.50 pp (limited to 48 tickets)

Prizes for winners,
and there will be a Grand Raffle!

A really good evening
of food and fun!

Tickets available from
Richie 01903 877930
or Mike 01903 877255

Don't Forget!

You can read Findon News on
the Findon Village website
www.findonvillage.org

Tea Rooms/ Cafe's to talk about - Some of our favourites

The Junction - Clapham

Having heard rumours that the Junction in Clapham had re-opened we recently decided to go there for lunch.

The previous shop and cafe had unfortunately closed after lots of problems and complaints. It is now run as a community venture with mainly volunteers. They are offering the usual beverages and sandwiches and cakes, as well as a few items for sale in the shop. They are also hoping to run

several community based events such as a Saturday coffee morning.

They will need support to build a sustainable business.

Opening hours are presently
12.00 – 14.00 Mondays – Fridays,
12.30 – 14.00 Saturdays.

They are happy to open other times by request (eg for walking groups).

For more information telephone
07803 074424 or email
Junction975@yahoo.com

Monica Eastabrook

Do you have any favourite venues to recommend?
Please let Findon News know and share it with others. Ed.

Dog friendly Holiday Home in Findon

The Haven @ Findon is a modern 2 bedroom bungalow in Findon village that sleeps up to 4 people and is ideally situated for family and friends (and their dogs) visiting relatives, attending weddings, parties or just wanting a weekend break or holiday. It is available on a self-catering basis from a minimum 3 night stay.

We are rated 'Excellent' on Trip Advisor and AirBNB.

You can visit our website -www.thehavenfindon.uk or for more details or enquiries phone Steve on 07590533892

CLIP CLOPS

Holiday Accommodation

In Findon Village

Lovely spacious self catering accommodation - sleeps two

Twin bedroom, Sitting room, Shower bathroom, lovely spacious sun lounge, Kitchen and garden.

Dogs welcome. Easy walk to local pub & shops or onto the downs.

Minimum stay 3 nights.

Contact: Karen 07886650747
karmitage58@gmail.com

HOLIDAY ACCOMMODATION

“Little Longmead” Findon Village
Sleeps 4 - Self Catering

1 Double King Size, 1 Twin room, Bathroom Kitchen, Lounge Dining, Lovely Views

Own Enclosed Garden & Patio with Garden Furniture and Barbecue

One Well Behaved Dog Welcome

Minimum Stay 2 Nights

Contact Ann: Tel - 07802507976
Email - pamamm@talk21.com

DOMESTIC HEATING & ELECTRICAL SERVICES LTD

Heating, Plumbing & Electrical

Est 1968



- Boiler Installations
- Electric Boiler Installations
- Boiler Servicing & Repairs
- Gas & LPG (all appliances)
- Power Flushing
- Hot Water Cylinders
- Gas Fires & Wood Burners
- Bathroom Installations
- Radiator Installations
- All Plumbing Works



01903 442108

1-2 The Forge, Findon Village, West Sussex, BN14 0SE
www.domesticheatingservices.co.uk



Come along and enjoy
A Pointless Evening
(a fun quiz evening)

In Aid of Friends of St John the Baptist Findon

Friday April 12th

7 for 7:30pm start
Findon Village Hall, BN14 0TA

Buffet provided

Bring your own drink

Tickets £7.50 from
Peckhams the Butchers

For more information contact
Ian Hollyhomes 01903 872475 or
Gerald Hibbs 01903 872563

Curry Nights - All welcome

The next Curry Nights at
The Tajdar Restaurant
Ladies - Monday 1 April @ 7.00pm
Men - Thursday 25 April @ 7.15pm

By Kind permission of
Findon Parish Council
Findon Church are organising

the **2nd Stoolball**
competition

Sunday 2nd June
on Nepcote Green
from 11-30 am

BBQ by Friends of Findon Church

For further details contact
Graham 07753 755889

Cinnamon Trust

The "Winter Warmer" on Nepcote Green was a great success on Sunday 10th March despite a howling gale and freezing temperatures. All the lovely home-made soups (thank you Lorna and Judith) were gone before 12 noon and we raised a wonderful £150 thanks to the lovely people of Findon and around!

Grateful thanks to all who helped in any way but especially to Jan Churchfield, Judith Davis and John Martin for staying up there on the green to the "very" bitter end!

The funniest moment of the day was when Maisie the Airedale helped herself to a baguette and ran off across the green with her owners Gay and Gerald in hot (and failed) pursuit. A video camera would have been handy!

Our next event is on Saturday 18th May at 14 Nepcote and will be a Springtime Tea in the garden with lovely cakes and goodies plus stalls and a raffle. Please keep the afternoon free.

All the best,
Maggie Martin
01903 874173/07544 572702)

Thank You

Eunice & Peter Rodgers of High Street Findon wish to express their thanks for all the kind thoughts and support that they have received following the loss of their daughter Susan.

Village House Hotel
The Square
Findon Village
BN14 0TE

Village House

Wednesday **Thai** Night:

Fresh Home Made Curry Pastes. Unique Flavours.
Healthy Ingredients....

Enjoy Our Thai Tapas Styled Starters Followed by
One of Our Fabulous Main Courses...

Only £16-95

Wood Fired Pizza

Every Tuesday Night

Mid Week Two Course Lunch Menu

Grab a Quick. Delicious Meal

Mon - Fri £12-95

Great Food ~ Great Beer ~ Great Place to be.....anytime

Great Roasts
Served Every Sunday

01903 873350

facebook @Findonvillagehouse

www.villagehousefindon.co.uk

Gardening Titbits

Catherine York

Because of the unusually warm winter weather my forget-me-nots were already showing blue flower tips before the end of February! Last year, there were hardly any in my new garden so I potted up one or two little plants and, when they died, moved the pots all round the garden so they could seed themselves, saving me the need to plant them in the ground. This is a boon for any places difficult to dig. I even laid some dead stems in the tub with my bamboo plant, where it had been impossible to get out all the weeds amongst the thick forest of bamboo canes. And it worked! So hopefully the weeds will be smothered by lovely blue forget-me-not flowers instead. When the plants turn scraggy, I pull them out by their roots knowing seeds will already be in the ground for next year.

In March 2016, my son bought me an unknown plant for Mothers Day called *Andromeda polifolia* "Compacta" (bog rosemary). He did not care that it required acid soil while I am gardening on chalk. He said it was his job to get me a plant and my job to sort out its requirements. I had a spare clay pot, tall and thin, tapering at the bottom, which looked ideal and I potted it up in ericaceous compost. That was three years ago and apart from watering it once

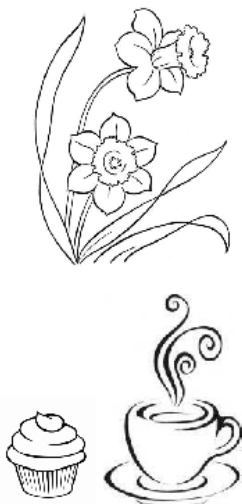
a week in dry weather and adding a granular feed in spring it has been so easy; thriving on a warm sunny patio. It is evergreen with a dwarf round compact shape of tiny grey-green leaves which are flushed mauve-pink in winter.

Then tiny balls of pink-white flowers appear in spring for many weeks. It always reminds me of an ice-cream cornet, with the tapered terracotta pot as the cone and a round blob on the top.

On Gardeners World, Carol Klein introduced me to a gorgeous plant that I had to have: *Geum* "Totally Tangerine". I planted it in my east facing border with a wall behind it and it started flowering at the beginning of April 2018 and never stopped until 22 July. Each flower lasted 2 weeks and the orange buds were showy even before they opened. The stems were up to 3 feet tall and they elegantly intertwined with other nearby flowers. It looked lovely with pale blue forget-me-nots; purplish-pink (deadnettle) *lamium* "Beacon Silver"; sprawling magenta-rose geranium "Russell Pritchard" (Jun-Sep), and the white-green evergreen leaves of *euonymus* "Silver Queen". I had to move out *primula vulgaris* because its pale cream colouring spoilt the dramatic effect. I am looking forward to it doing the same all over again this year.

Findon Village Gardens Association 🏆 Spring Flower Show 🏆

Saturday 6th April 2019
2pm in the Village Hall



Refreshments

Competitions -
Flowers
Flower Arranging
Cookery
Photography



Plant Stall

Raffle

Everyone welcome – free entry
(but donations are appreciated)



CARPET FITTING

We Will Fit

Your Own Carpets

Re-stretching - Repairs - Cleaning
Supply underlay - Hardboard - Screeding

We supply all makes of carpets and vinyls

Call Les Sheeran on:

Tel: 01903 770477

Mob: 07966 212 358

www.carpetsandvinylsdirect.co.uk

Over
30 yrs
trading

F Silverthorne

Fishmongers

Quality Fish Est. 1907

145 Montague St, Worthing

Deliveries to Findon

(Thursday & Friday Mornings)

Tel. 01903 200854

Call by 9:30am on the day,
or the day before your delivery



MONARCHS WAY Wellbeing Clinic

36 Cross Lane, Findon Village

**Sports & Therapeutic Massage therapies for
general aches and pains, arthritis, sports,
recreational and occupational injuries, stress and
stress related conditions and general wellbeing.**

By appointment only – please call 07841 636727

www.monarchswayclinic.co.uk

AcTechUK.com

Making Technology Work For You

Help with all aspects of technology for
your home, mobile and business.

PC/Laptop fix, Network setup,
telephone, audio visual services
£30 call out with first fix and advice
No fix, no fee. Findon Valley based.

25 years experience.

Customer Service Like it Used To Be!

Please call Andy:

01903 930850 or 07515 948096

Email: info@actechuk.com

Peckhams Butchers

*Locally produced meat,
cut to your requirements.*

Daily deliveries of
fresh fruit & vegetables.

We also provide a Friday
morning delivery service
for customers who find it
difficult to get to the shop

The Square, Findon

Tel: 01903 873202

Findon Village WI

The March meeting was our birthday meeting – we're 45 years old! We were entertained by Ann Chance OBE. Ann performed her 'One Woman Show' playing her guitar, singing and telling stories and jokes.

One of our member's feedback summed up the evening '*Ann, the entertainer, was exceptionally good, and ideal for a party night. When she started she put me in mind of Ken Dodd, and when she said, you are here for the next four hours, - I thought definitely Ken Dodd! She was a lovely lady.*

We celebrated our birthday with a buffet and a birthday cake (thank you Gay) and a glass of fizz.

Our next meeting is 11th April. Sarah Morris will be giving a talk based on the book *Woman at War* written by

Sue Lloyd-Roberts, a multi-award-winning BBC journalist who died of cancer in 2015 before completing this book. Sarah, her daughter, finished the book.

The competition is a homemade rag doll which our crafty ladies has been making

The next coffee morning at Julia's Kitchen is Wednesday 17th April from 10.30 – all welcome.

Visit our website – www.findonvillagewi.wixsite.com/mysite or find us on Facebook - Findon Village WI for the latest information of our various groups, or email findonvillagewi@hotmail.co.uk

All visitors welcome – we look forward to seeing you

Paddy Winter, President

Save the Date

Fund raising Concert For the Village Hall, By the Village

**Friday June 7th 7-30pm,
in Findon Church**

We already have several Musicians and Singers from the village willing to take part. If you have a musical talent and would like to know more about the concert, please contact
Graham 07753 755889

Bob Hendy Electrician

Installation / Re-Wiring
Security Lighting
Fault Finding

***24 Hour service
No Call Out Fee***

01903 877204

07850771246

200 Club

Bob Eastabrook

March's winner of £25 prize number was 63 – K Garman.



Local Freelance Hairstylist Wig Stylist & Wig Supplier



Hair & Wig services provided in the comfort of your own home

Services: Colouring Services, Cut & Blow dry, Hair Up, Keratin treatments, Sets, Perms, Wig consultation/fitting and styling



All Colours are Organic, and Vegan friendly - Organic hair products used
Member of The Freelance Hair Association &
MyNewHair (charity for medical hair loss sufferers)

*Fully
Qualified*

Call Rita on 07881 863271

*Fully
Insured*

www.hairs2uworthing.co.uk

FB: Hairs 2u -Rita

VIV'S *Help in the home*



ARE YOU ELDERLY, DISABLED or maybe recovering at home from being in hospital and need that little bit of help or simply a hand with the everyday running of your home?

I offer a reliable and a one to one personal service. I have over 20 years experience and references are also available.

Please call Viv on **01903 778552**

I can help with:

- ✓ Spring cleaning
- ✓ One-off cleans
- ✓ Light meals

Assistance such as:

- ✓ Making beds etc
- ✓ Weekly or fortnightly cleans
- ✓ De-cluttering



ALLCLEAR GARDEN SERVICES

- ** Lawn Mowing **
- ** Hedge Cutting **
- ** Garden Tidy's **

CONTACT: Wayne Hardie

TEL:- 07733105548

email: whardie09@btinternet.com

FINDON SMALL WORKS BUILDING COMPANY

FLINTWORK SPECIALIST, BRICKWORK,
RE-POINTING, PAVING & PATIOS,
EXTENSIONS, LANDSCAPING, FENCING.

CALL PAUL

07939 210354 or 01903 872147

Paws Animal Sanctuary

We have six lawns. All of a sudden the grass has sprung up and needs cutting. The battery is charged ready, then it pours down for a couple of days. In the morning it's too wet to cut, when the sun comes out there are so many other jobs to do first. By the time we have been to collect hay or animal food and put it all away, been to the Vets, come back, and started to do the evening feeding- it gets dark so quickly- we are too tired and decide to do it tomorrow.

Our telephone never stops, and we always have a steady stream of visitors in and out every day. Some with injured birds, hedgehogs, stray cats, others asking advice with everything from problems with their cats, dogs, rabbits, guinea-pigs, tortoises and hens. We always try to help with any problems, although we do tell them every time we are not Vets. Just this morning a concerned lady came in with a problem with her ducks. Luckily we have a friend who is an expert on poultry and ducks. He lives in Findon and Judges at Shows all over the country. He just happened to be here this morning and told her how to solve her duck problem.

Yesterday I was out collecting hay and straw, when I returned Sheila had been called out to pick up an injured pigeon. The day before a lady rang from Brighton, could we go and pick up two, one year old kittens. She didn't drive, she said, and she couldn't afford to keep them. They were covered with fleas and both hadn't been neutered. So we have three different Vets appointments booked with different cats for next week.

Five Guinea-pigs arrived that belonged to children who had got fed up with them. It took us hours trying to get the tangles out of their coats and cutting all their nails that were so long they curled round.

A lady who is in hospital asked if we could please take her French Bulldog and find him a home. She said she had rung all the

rescues but they couldn't help her. The problem is the dog has a really bad on-going skin problem and the Vets have tried all sorts of expensive treatments, and yesterday he had a steroid injection. She has three other dogs being looked after. The poor dog is in a lot of pain, scratching making the condition worse. What a headache!

It is a big problem when people bring in a lost dog or cat. We used to just ring up Petlog and they could tell us the owner's name, address and phone number if the animal was micro-chipped. Since the law changed and all dogs have to be micro-chipped many new companies have sprung up. Now Petlog will tell us it's not one registered with them. They tell us the name of the new company if we are lucky, or we have to go on line to try and discover who the animal is registered with. Even worse, Petlog have always let us change the ownership details free of charge, but these new ones make us pay to change the name and address of the new owners, and it is not cheap. We can have a lost dog sitting here for hours while we try and find details of the owner. On a Sunday they often say 'sorry all our lines are now closed'.

Sometimes this sanctuary is organised chaos!

Stacey

Paws Animal Sanctuary Findon
15 The Oval, Findon Village
West Sussex. BN14 0TN
01903 872 734 / 0790 447 6819

We never use an ansaphone so keep trying someone is always around.
7 days a week.

Open to Visitors 12-4pm Sundays.
email: pawsanimals@hotmail.co.uk
www.pawsanimalsanctuaryfindon.co.uk
Registered Charity 1096231

Fairy Dusting

Domestic Cleaning Services



"I love the jobs that most people dread!"

CRB Checked

Fully Insured

- ✓ Free quotations & tailor-made services to meet your needs
- ✓ Flexible schedules - weekly, fortnightly or monthly
- ✓ Can provide own equipment or use yours
- ✓ References available on request

Call NOW - 07745 635320

Teena Dowling, Rustington, West Sussex

www.fairydusting.co.uk

email : fairy.dusting@outlook.com

R J Maslin Of Worthing

- * Traditional French Polishing *
- * Antique Preservation *
- Modern & Antique Furniture
- * Restoration & Repairs *

Tel: 01903 719879
Mobile: 07743528139

Tom Langford Services

Plumbing, Heating, Drainage, Gas

Free Estimates ~ 24 hour Callout

Small Job Specialist

Gas Safe Registered

07836 479493

Astracolour Photographic and Picture Framing

(Eric Beadel L.M.P.A & Edward Beadel - Partner)

www.astracolour.co.uk

We specialise in Wedding photography and picture framing.

A full portfolio is available to view.

Tel: for an appointment day or evening.

Copying and restoration of your old photo's
and instant passport photographs (4 for £8.00)

35 The Quadrangle, Findon Village Tel: 01903 877677

AROUND THE VILLAGE



Safe Searching for Kids

Use Kiddle.co

Note: The .co domain name denotes it is for "children only".

If you worry about children accessing inappropriate content when they're browsing through the internet, then Kiddle could be the answer.

Kiddle.co is a web search engine and online encyclopedia emphasising safety for children. It is powered by Google and uses software to keep any searching free from unwanted surprises!

Kiddle returns and ranks its finding with its first three results

being suitable for children, as well as an easy reading level.

.....and for those of us who don't like unwelcome content when searching the internet, Kiddle could provide the answer!

Findon Planning Applications

Planning applications for Findon are under the authority of South Downs National Park and listed on the SDNPA website (www.southdowns.gov.uk).

Findon Parish Council (FPC) Planning Committee meetings are scheduled monthly to consult on planning applications received from the South Downs National Park Authority (SDNPA). Parish Consultation Letters (PCL) received from the SDNPA are displayed on the Notice Boards outside the newsagents and the Village Hall, and published on the FPC website (<http://findon.arun.gov.uk>) along with the schedule of Committee meeting dates.

Please note that due to Findon News publication deadlines, some applications may have already been placed before the Committee. Residents should check the Notice Boards and FPC website regularly to view notices and meeting details. Any enquiries should be address to the FPC Clerk - 01903 877225. Since the last issue of Findon News, no Planning Applications have been posted on the SDNPA website:

Erection of dwelling, landscape enhancements and associated works Open for comment

Land East Of Pony Farm Findon BN14 0RS Ref. No: SDNP/19/01239/FUL



High Street, Findon Village

Rare opportunity, deceptively spacious 3 bed period cottage, circa 1500's, wealth of period & character features, exposed beams, Inglenook fireplace. Large lounge, separate dining room. Walled south rear garden, additional courtyard, garage. The abundance of charm make this home a real treasure. Internal inspection essential.

Offers Over £500,000

Findon Office 01903 872949 208 Findon Road, Findon Valley BN14 0EJ www.michaeljones.co.uk

THE MALAYSIAN TEA COMPANY

FINDON BASED & SELLING SINGLE
ESTATE PREMIUM QUALITY TEAS



Tea Bags: These double-chamber black-tea bags use the finest Orange Pekoe tea leaves
Also available as Earl Grey and in other Fruit flavours.

Loose Leaf Black Tea: Available in both Orange Pekoe & BOPF (Broken O P Fannings)



GROWN IN THE CAMERON HIGHLANDS SINCE 1933
AVAILABLE NOW AT FINDON POST OFFICE

CAMERON VALLEY MALAYSIAN TEAS
ONE KUALA LUMPUR OR TWO?

Clapham & Patching Service Rota April 2019

Date	Service	Priest	Laymoc	Readings	Readers / intercessors
7th April Lent 5	Clapham SE 10.00		Kath Hutchinson	Isa 43:16-21 John 12: 1-8	Sian Fletcher / John Hammond
14th April Palm Sunday	Patching E 8.00	Colin Cox	Pauline Prior	Phiiippians 2:5- 11 Luke 23:1-49	Dorothy Barber
19th April Good Friday	Patching 2.00pm Meditation	Helena Buque Colin Cox		Isa 52: 13-53 John 18: 1-19	
21st April Easter Day	Patching SE	Colin Cox	Kath Hutchinson	Acts 10: 34-43 Luke 24:1-12	Pauline Prior/ John Haskey
28th April Easter 2	Clapham E 8.00	Colin Cox		Acts 5:27-32 John 20:19-end	
	Patching FS 10.00			"	

Palm Sunday Worship - Findon

begins at the later time of **10am**

Everyone is welcome to come to the Rectory around **9am** for a bacon buttie and drink before walking (or not) to the church with the donkey

Light Lunch @1pm

Last Tues of the month

Next Lunch 30th April

at Findon Village Hall. - £5. -
Everyone welcome.

**your
community
vet**

Expertly caring for dogs, cats and other domestic pets in West Sussex for over 35 years!



-  Puppy & Kitten Clinics
-  Microchipping & Pet Passports
-  Orthopaedic, Spinal, Soft-tissue & Reconstructive Surgery
-  Laparoscopic (key-hole) Surgery & Advanced Laser Therapy



 **NEW Extended Vet Consulting Hours**

We've increased our weekday consulting hours, ensuring our clients have greater access to the vets at the most convenient times.

 **Introducing Pet Health Plans**

Simple, affordable & money-saving
A proactive, preventive approach to your pet's healthcare. Please visit our website for more info.

43 School Hill
Storrington
01903 743040

179 Findon Road
Findon Valley, Worthing
01903 877325

2 High Street
Steyning
01903 816428

www.crosswaysvets.co.uk

**For all your home water needs,
speak to the professionals - UKh²o**

Water softeners

installation, servicing and salt

Filtered drinking water systems

and boiling water taps

Kitchen and bathroom design

plus installation

Heating and plumbing services




01903 500 551 | www.ukh2o.com
50 Ferring St, Ferring, West Sussex BN12 5JP



Findon, Clapham & Patching Churches - April

Walking together in the Way of Christ and sharing His love with others

Sunday 7th April	8.00am	Eucharist, Findon Church
	10.00am	Worship and Praise Service at Findon
	10.00am	Sung Eucharist at Clapham Church
Sunday 14th April Palm Sunday	8.00am	Eucharist, Patching Church
	9.15am	Breakfast followed by procession to:
	10.00am	Sung Eucharist, Findon Church
Holy Week		
Mon 15th April	6.00pm	Stations of the Cross at Findon Church
Tue 16th	10.00am	Eucharist at Findon Church
	4.00pm	Stations of the Cross at Clapham Church
Wed 17th	11.00am	Stations of the Cross at Patching Church
Thurs 18th Maundy	6.30pm	Agape at Findon Church
Fri 19th Good Fri	9.30am	Findon Village Hall Messy Church & Walk of Witness to:
	10.45am	Pond Green Worship
	12 noon	Service of Meditation at Findon Church
	2.00pm	Service of Meditation at Patching Church
	06.00am	Sunrise Service at Findon Church
Sunday 21st April Easter Day	09.30am	Sung Eucharist at Findon Church
	10.00am	Sung Eucharist at Patching Church
Sunday 28th April	08.00am	Eucharist, Findon Church
	09.30am	Breakfast, followed by
	10.00am	Village Hall Family Service Sung Eucharist at Clapham Church

Messy Church 1st Tuesday of the month (2nd April). TERM TIME ONLY. Starting at 3.30pm-5.45pm at Findon Village Hall. All children and their grown-ups welcome. 

Youth Club Every Thursday, with different themes every week (during school term time only). Ages 12+, 5pm till 6.30pm at The Rectory, Findon.

Curry Nights The next Findon Tajdar Curry Nights are 1st Monday of the month, 1st April (Ladies) 7pm and last Thursday of the month, 25th April (Men) at 7.30pm.

Quiet Time in Findon Church. 2nd Monday of the month (8th April).

Afternoon Plus – 3rd Thursday of the month at 2.30pm. Different events every month, details on the pew sheets or contact the rectory office.

Light Lunch @ 1pm last Tues of the month, at Findon Village Hall. £5. Everyone welcome

Rev. Helena Buqué, Priest in Charge and Rev. Colin Cox, Curate:
c/o The Rectory, School Hill, Findon BN14 0TR.
Tel: 873601, findon.rectory@btinternet.com

DOVETAIL *Kitchens*

The
little kitchen company
with big results!

Pop into our homely showroom with
our six best selling kitchen ranges on
display and let us put a smile on your
face with our prices

Customer in Angmering



Customer in Angmering



Family run local business • Design & full installation • Dry fits/Supply only
• Removing walls to create open plan • Bi-folds, sky lanterns, orangeries

Our 2019 diary
is now open and
taking bookings so
don't delay!

We are on Long Furlong, directly opposite Clapham Village hall

Gosling Croft Business Centre,
Long Furlong, Clapham, West
Sussex BN13 3UT

Please call: 01903 871 115
www.dovetail-kitchens.co.uk



broadwater osteopathic practice
exceptional treatment from head to toe

**Exceptional care by an
experienced, friendly team.**

**Weekend & evening
appointments.**

Free onsite parking.

£5 OFF

**Mention this advert & receive
£5 OFF your visit to BOP***

**T&Cs apply (selected therapists only)*

Osteopathy, Cranial Osteopathy, Sports Therapy, Chiroprody, Hypnotherapy,
Counselling, Homeopathy, Bowen, Emmett, Massage, Acupuncture...& much more!

2 Sompting Road, Worthing BN14 9EP 01903 820206

worthingosteopathy.com

Village Hall - April

For all booking enquiries please
email findonhallbooking@gmail.com

Weekly	Day	Time
Danceaholics	Sunday	19:30
Just Yoga	Monday	10:30
Carpet Bowls	Monday	14:30
You Yoga	Tuesday	18:45
Line Dancing	Wednesdays	09:45
Reduce Stress & Stiffness Yoga	Wednesday	19:30
Paracise (from 17 th)	Wednesday	14:00
Lambstails (Term Time)	Thursday	10:00 – 12:00
Tai Chi	Friday	10:00 – 13:00

Fortnightly	Date	Time
Circle Dancing	1 st , 15 th	19:10

Monthly	Date	Time
Bead Magicians	16 th	09:00
Downs WI	9 th	14:30
Gardens Association	26 th	18:30
Messy Church	2 nd , 19 th	13:45, 9:00
Village WI	11 th	18:45
Meditation	n/a	19:30
Tastevin	25 th	19:00
Light Lunch	30 th	12:00
200 Club	n/a	18:00

Committee Room	N/A
-----------------------	------------

Other Events	Date	Time
Garden's Association Event	5/6 th	17:00 / 9:00
Art Class	13 th	9:00

NB. booking times quoted are not necessarily the event start times

Bookings subject to change in relation to building work

The Village Hall website

provides contact and booking details as well as listings of forthcoming events

www.findonvillagehall.com

curtis and son

Findon's longest established family owned independent estate agents and valuers with an excellent local reputation



- Free valuations
- Local expertise
- Full colour particulars
- Accompanied viewings
- Competitive commission
- Free probate valuations
- Local and national advertising

01903 264161

www.curtisandson.co.uk

156 Findon Road, Findon Valley, Worthing, West Sussex BN14 0EL



'Findon's longest established family owned, independent estate agents and valuers'